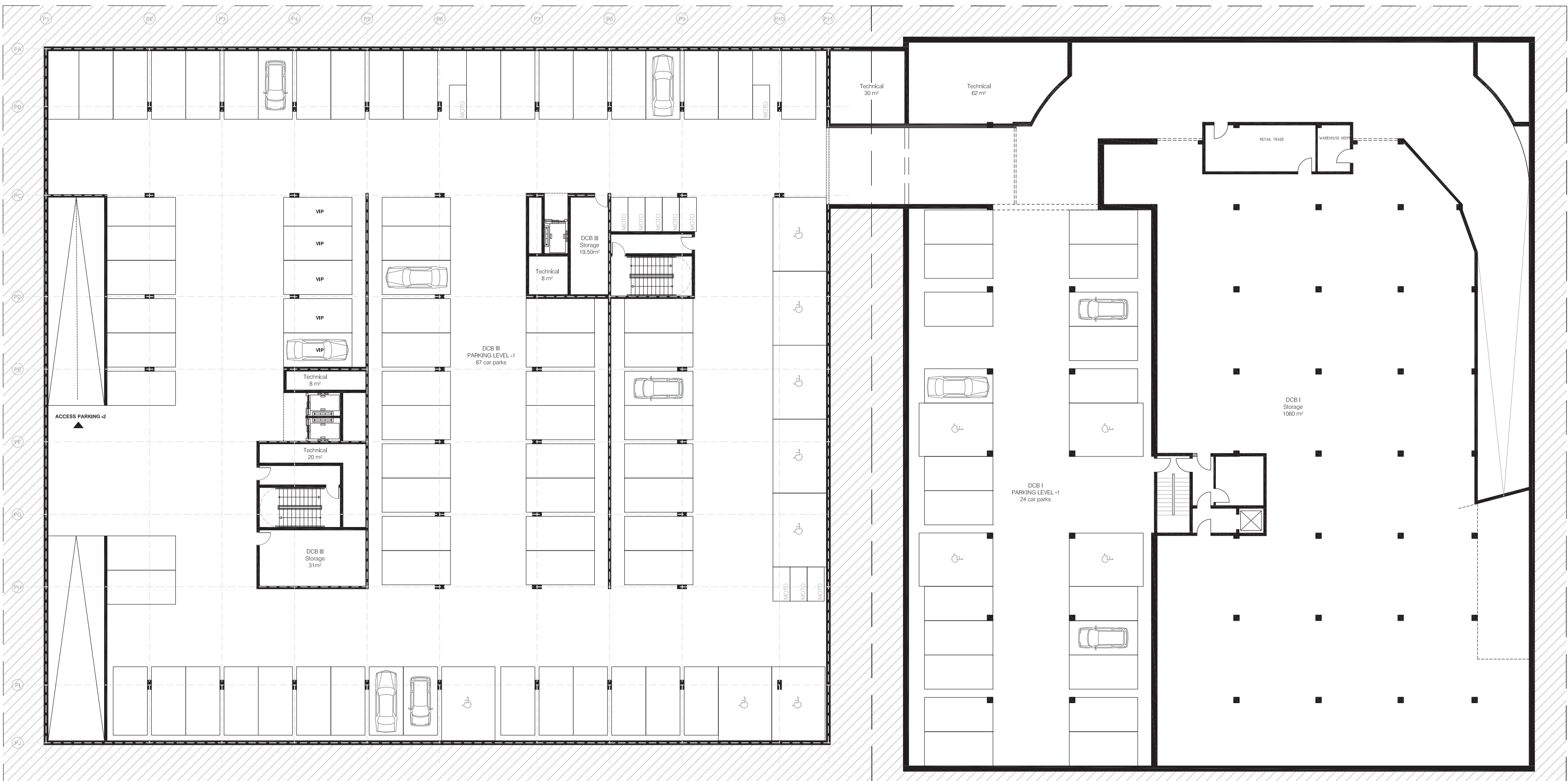
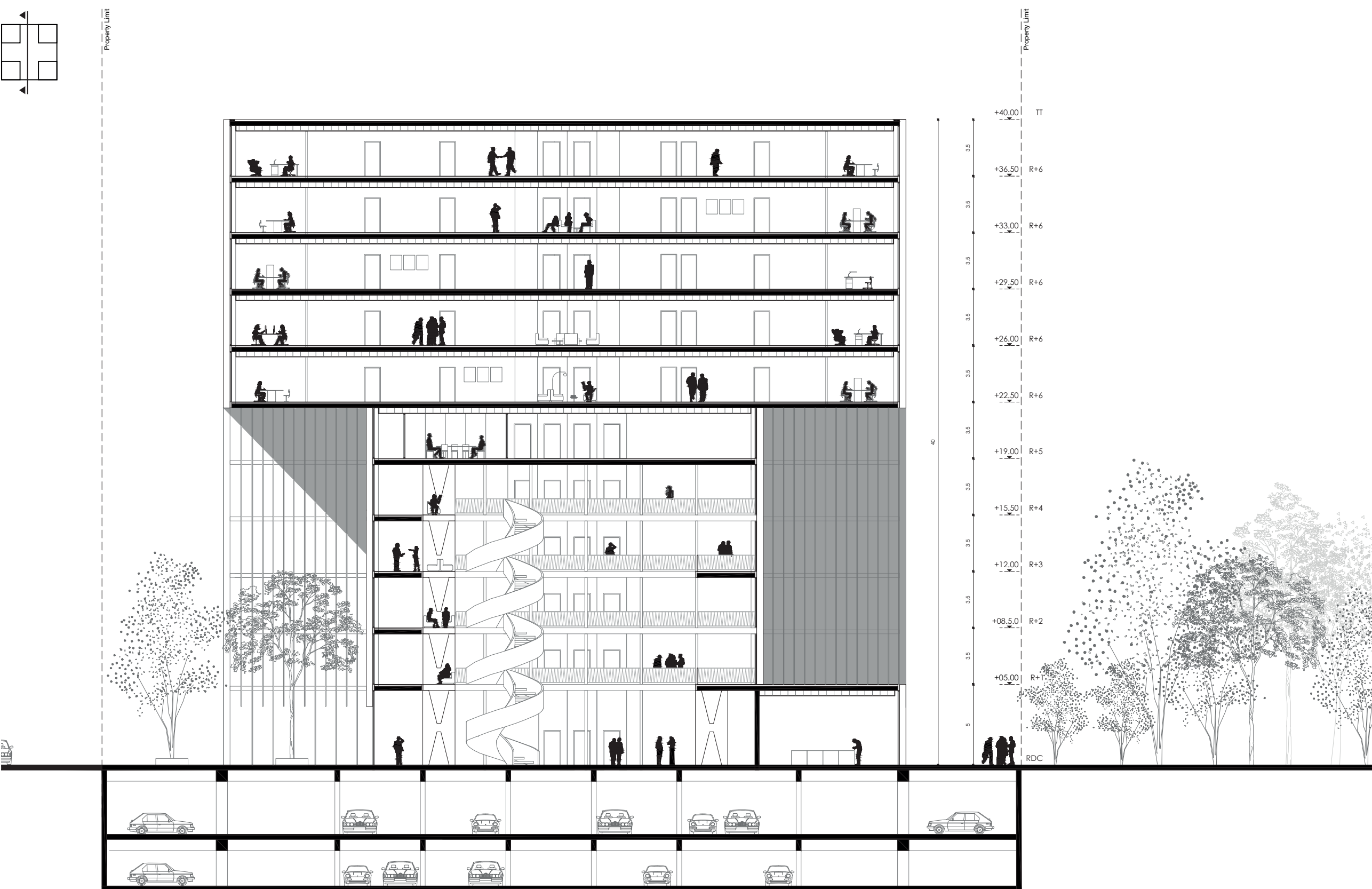


PARKING
Two levels of basement are occupied by parking spaces and technical rooms. Access to the car parking is by a ramp located on the west of building DCB3. A second ramp serves the second level of basement. The parking of the existing building DCB1 is connected to the one newly created. A ramp of building DBC1 gives access to the first basement level. The parking offer is completed on the ground floor by a parking on the east of the DCB1 building, as well as a grassed parking located between buildings DCB1 and 3.

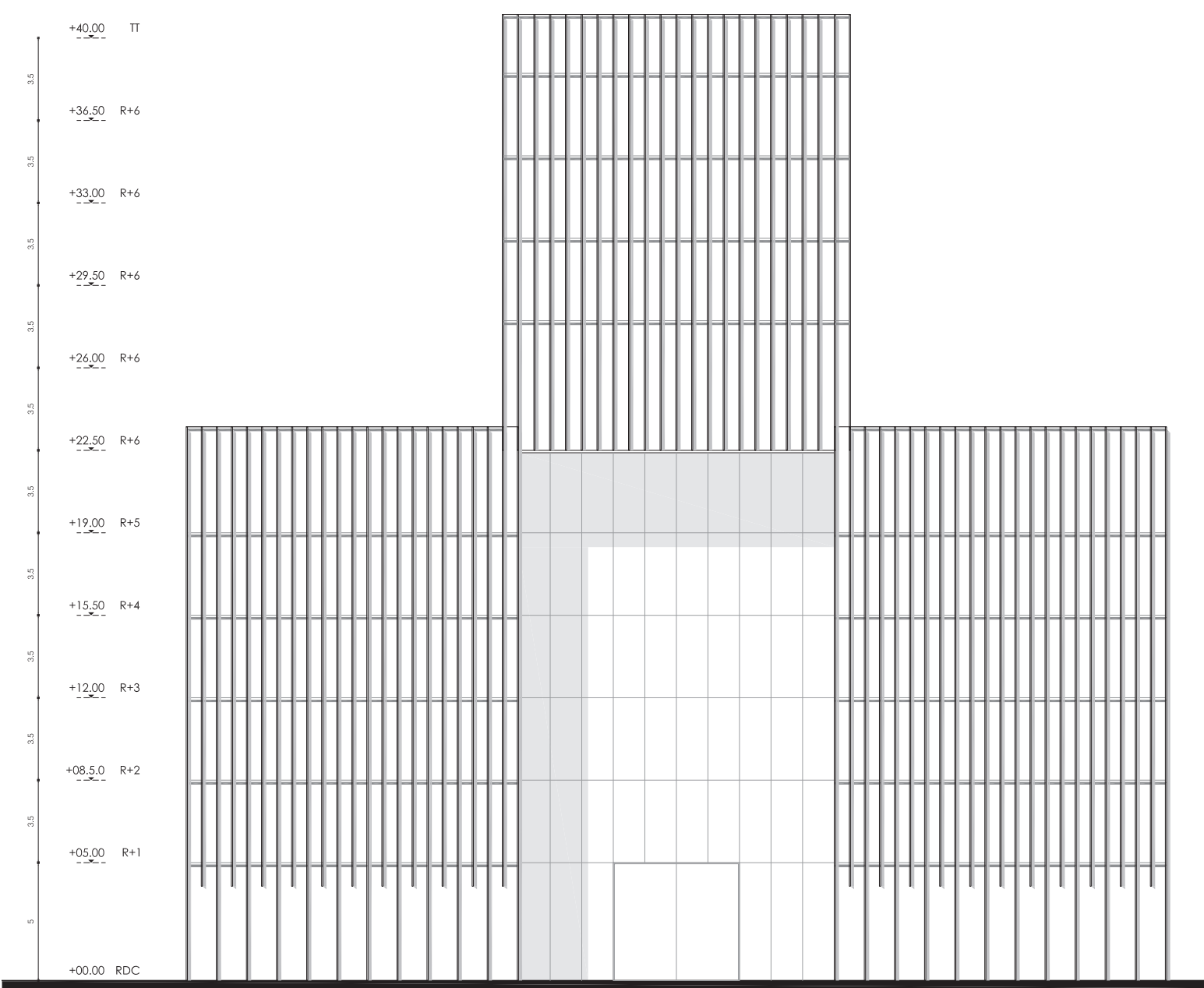
MATERIALITY
The glazed curtain wall façade is completed by a system of vertical skylights that provides natural sun protection. The material used is pink and green copper reminding of the mountains of Ljubljana. Inside the building, a wooden structure is located around the atrium. We have naturally focused on Slovenian wood with beech as our selected wood species. This wood is light in color. Very fine brass railings complete the “balconies of the scala” thus created.



UNDERGROUND LEVEL 1 - 1/250



SECTION - 1/250



SOUTH FACADE - 1/250



THE FORUM DURING THE DAY



JUST BEFORE A CONCERT AT THE THEATRE