

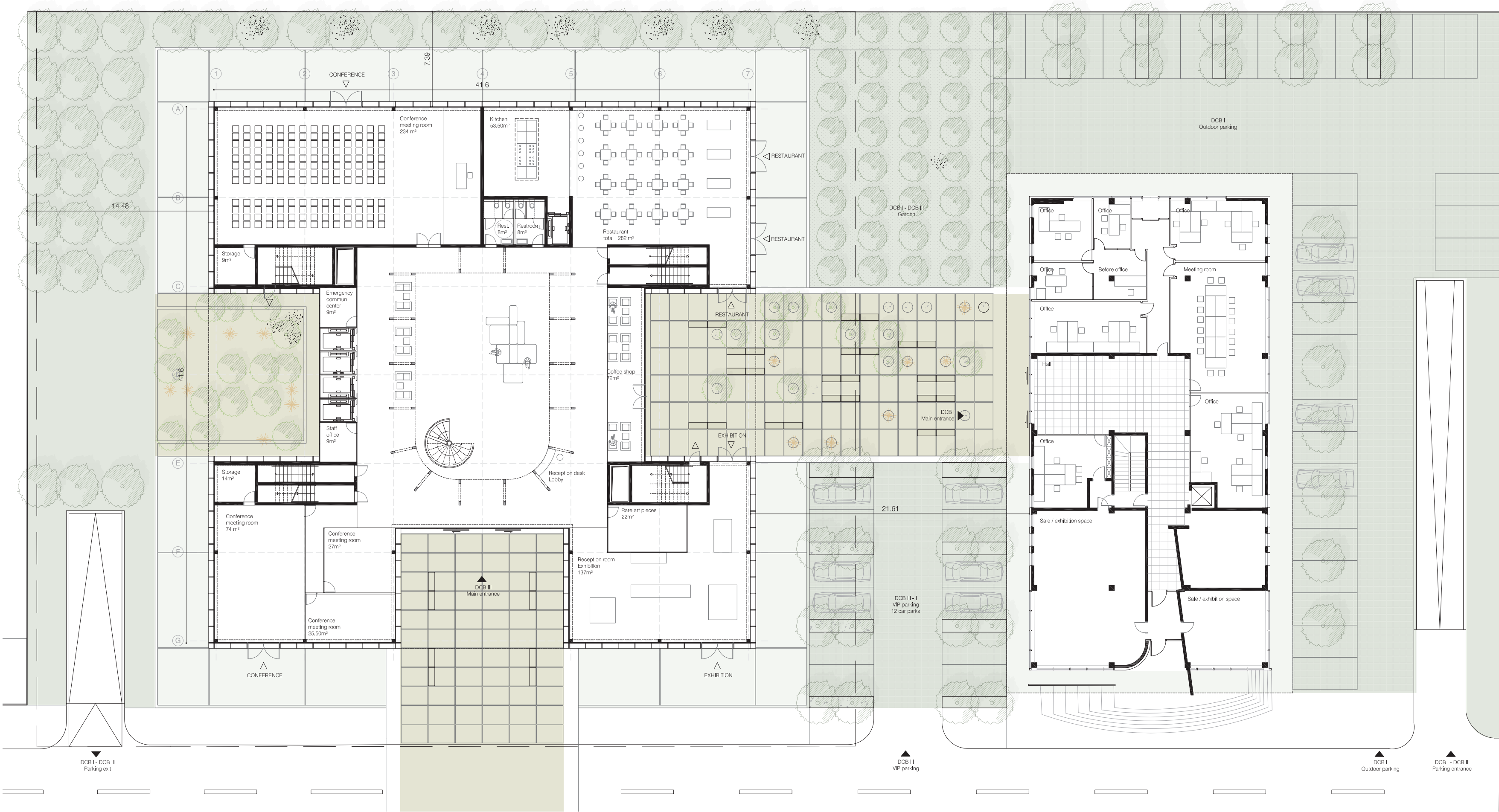
In the ground floor, the forum serves large spaces that can accommodate a wider audience. The fully glazed facade offers a clear view of the campus. The shape of the building makes connection between the main entrance and the building DCB2, and opens on a west garden and an east one, occupying the forecourt between buildings DCB1 and 3.

The large informal space welcomes the lobby relaxation areas and small workspaces, and invites users to meet and exchange. The staff office, access to the floors, as well as restrooms are set up all around.

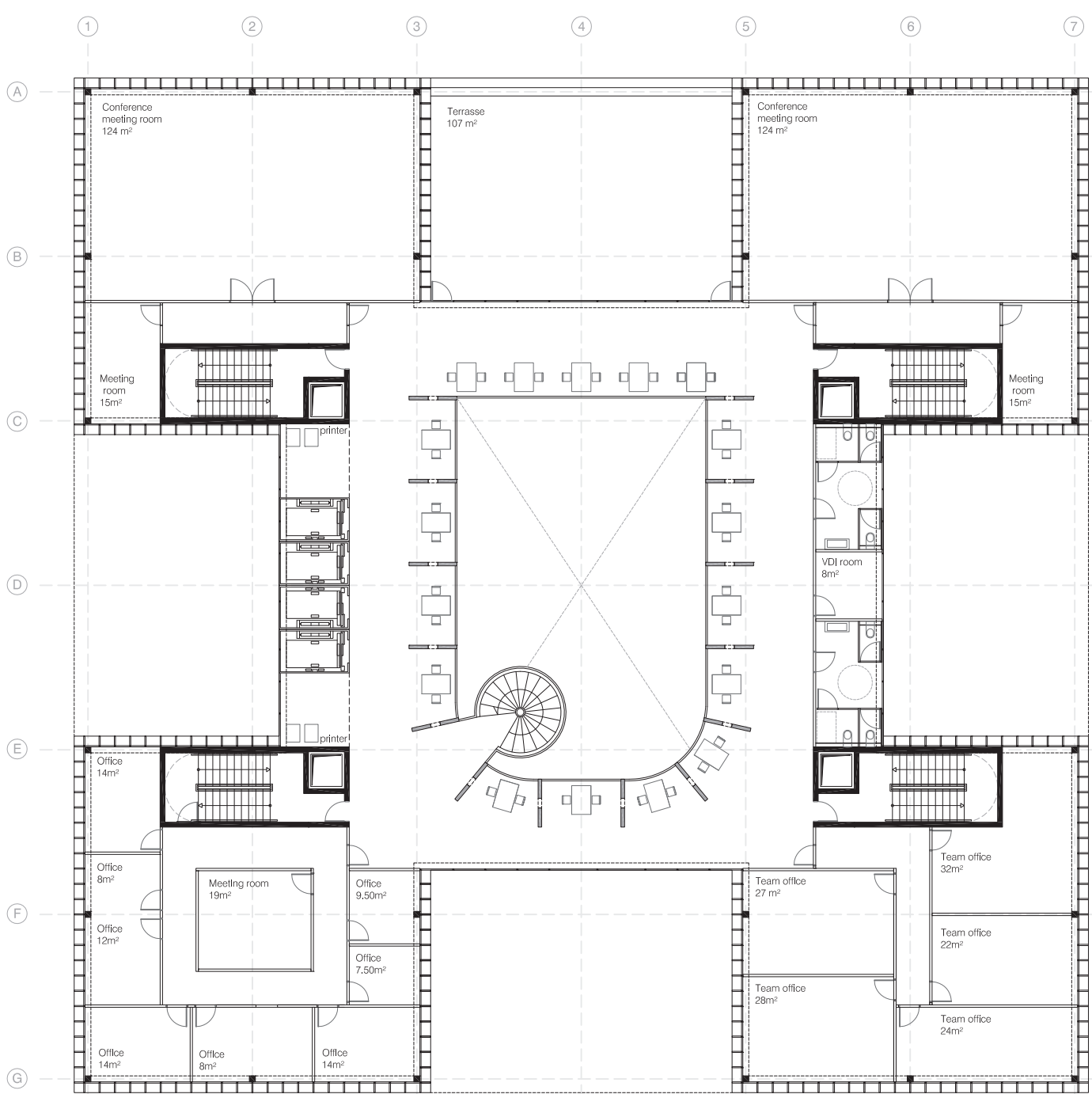
The restaurant opens onto the east garden and also offers a view to the existing garden located at the north of the plot. The catering offer is complemented by a coffee shop near the forum.

The conference center consists mainly of a large 230 square meters hall with its own storage space. Two medium-sized halls are located in the west pavilion of the main entrance. The rest of the conference spaces are located in the first level.

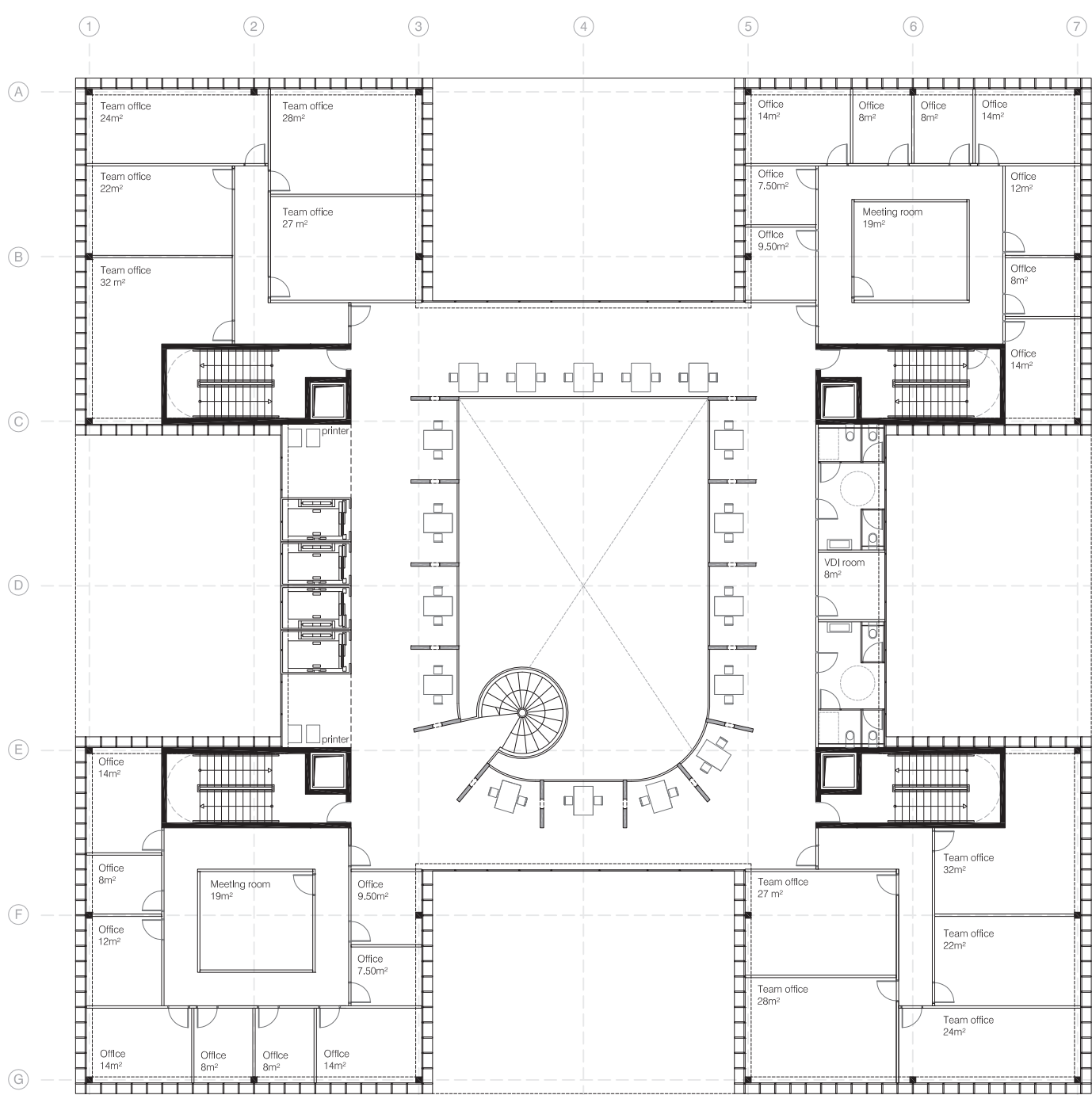
The exhibition space provides both the street and the connecting space with the building DCB2, and both on the forecourt between buildings DCB1 and 3. A closed room allows to see, in a secure way, the most valuable parts.



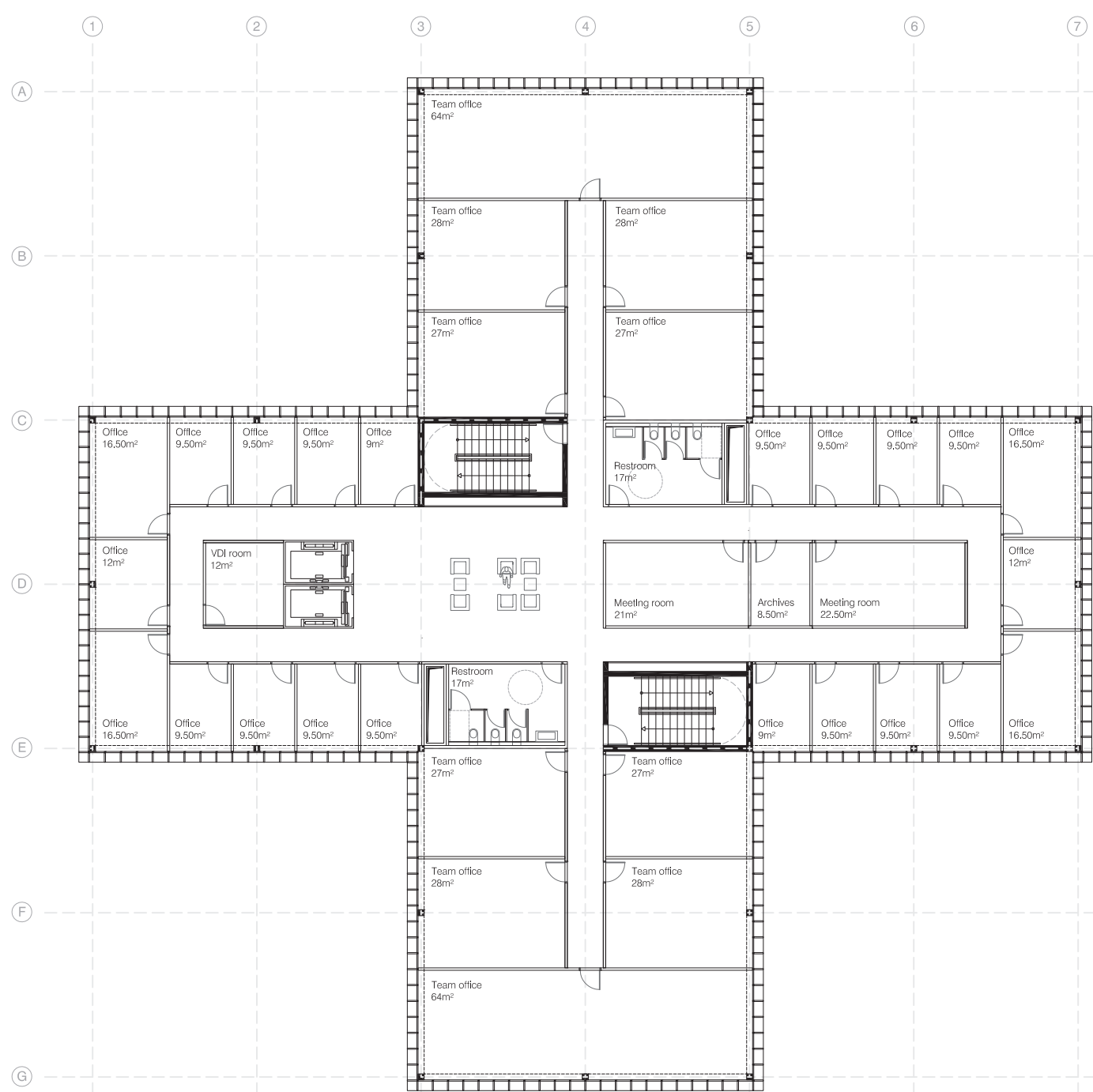
GROUND FLOOR PLAN - 1/250



LEVEL 1 - 1/250



LEVEL 2 TO 4 - 1/250



LEVEL 6 TO 10 - 1/250



DCB III PROTECTED LOGGIA



DCB III MAIN ENTRANCE