

THE NEW DIMNIKCOBAU CAMPUS

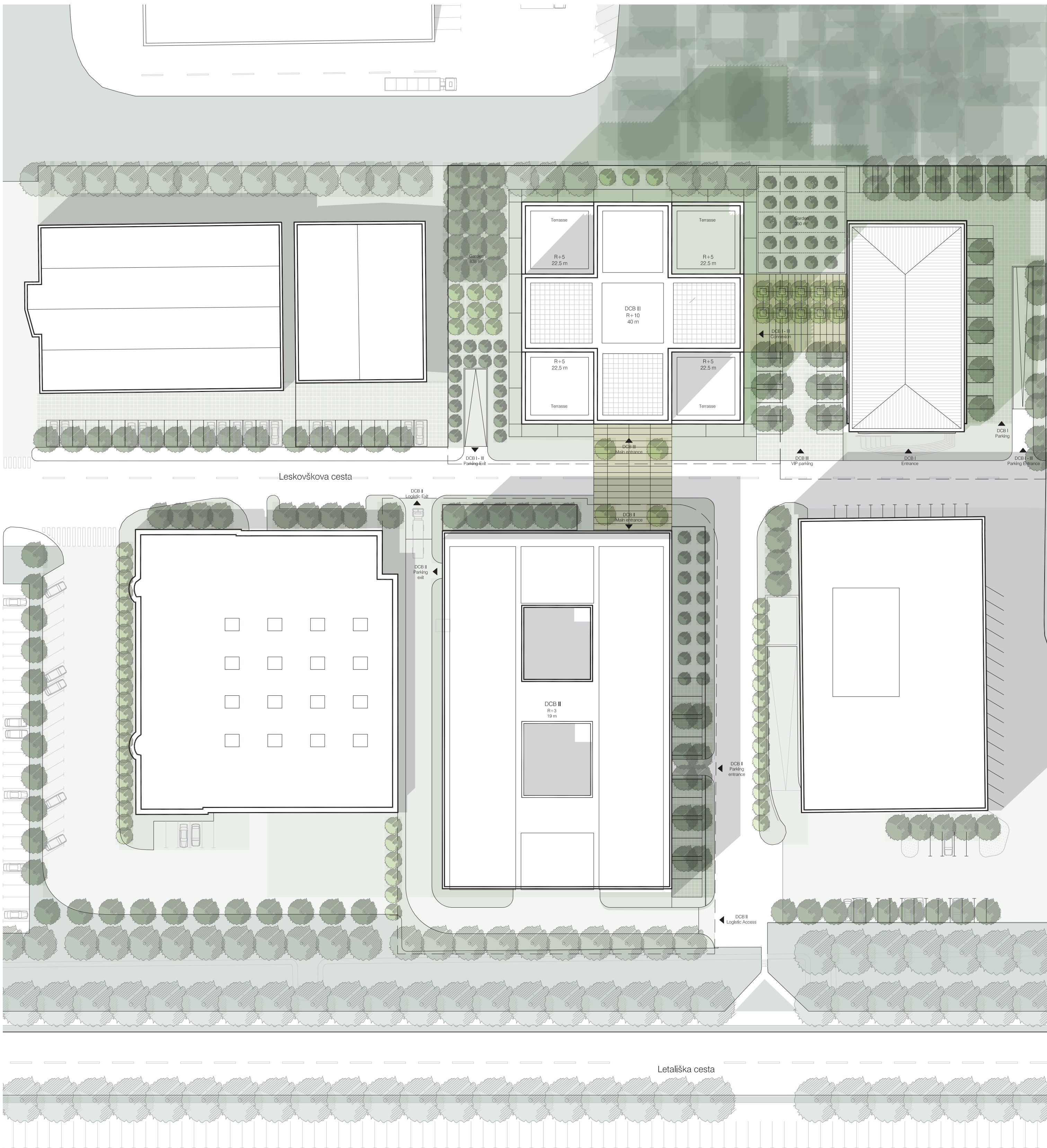
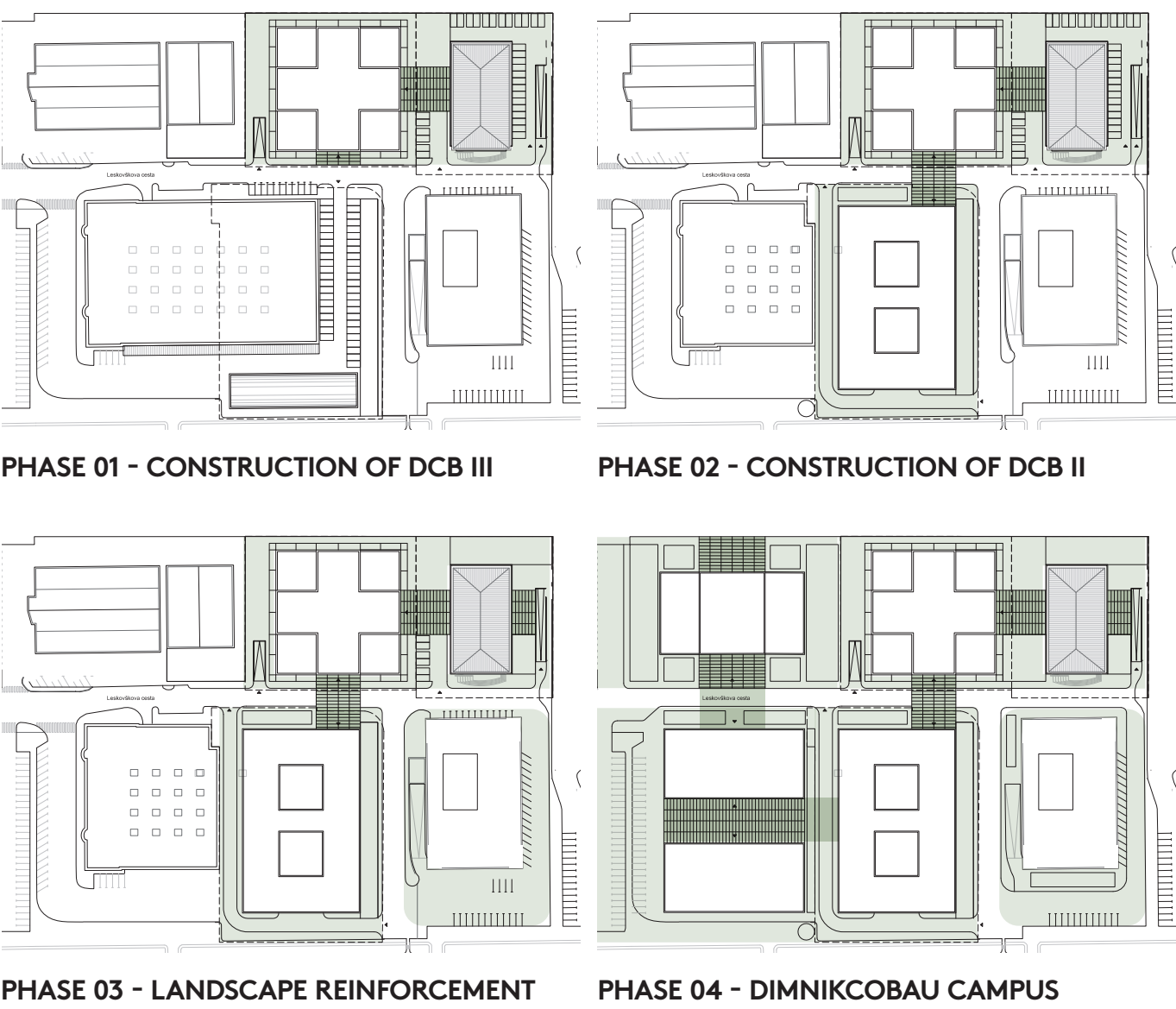
The construction of new buildings on the Dimnikcobau Business Park site needs to define the possible relationship between these entities. It is about imagining the site and its evolution, envisioning a form of urban planning for the activity and drawing a sort of city. By “city” we mean a set of individual, collective and interconnected places within a given limit. This principle already has a name: the campus.

Its first use referred to the urban space of New Jersey College (Princeton University) in the early 17th century. The meaning was later generalized to include all university properties during the twentieth century. Since the end of the twentieth century, the meaning of the word “campus” has expanded further to apply to some companies’ complexes, especially when they consist of several buildings surrounded by green spaces. This usage remains common today and a campus is a place where the relationship to nature undertakes a fundamental character in its daily use.

The external-interior, empty-full, organic-organized, human-ecosystem relationship is part of the identity of this kind of structure. Thus, the balance between nature and artifice is the question epicenter. In this context, the space allocated to vehicles also becomes an extremely sensitive subject. One of the major issues of the project for the Dimnikcobau will be to find the right scale allowing these places to be inhabited by nature and by light.

Actions and strategies :

In the light of the ambitions described above, we have tried to imagine a project that will eventually transform the current site into a campus city. More than a project, the real question is to find a strategy thought over time. The one we settled for follows several points: the notion of center, stratum, scale, logistics, language and relationship to the landscape.



1 SITE PLAN - 1/500



AERIAL SOUTH WEST VIEW



AERIAL NORTH EAST VIEW