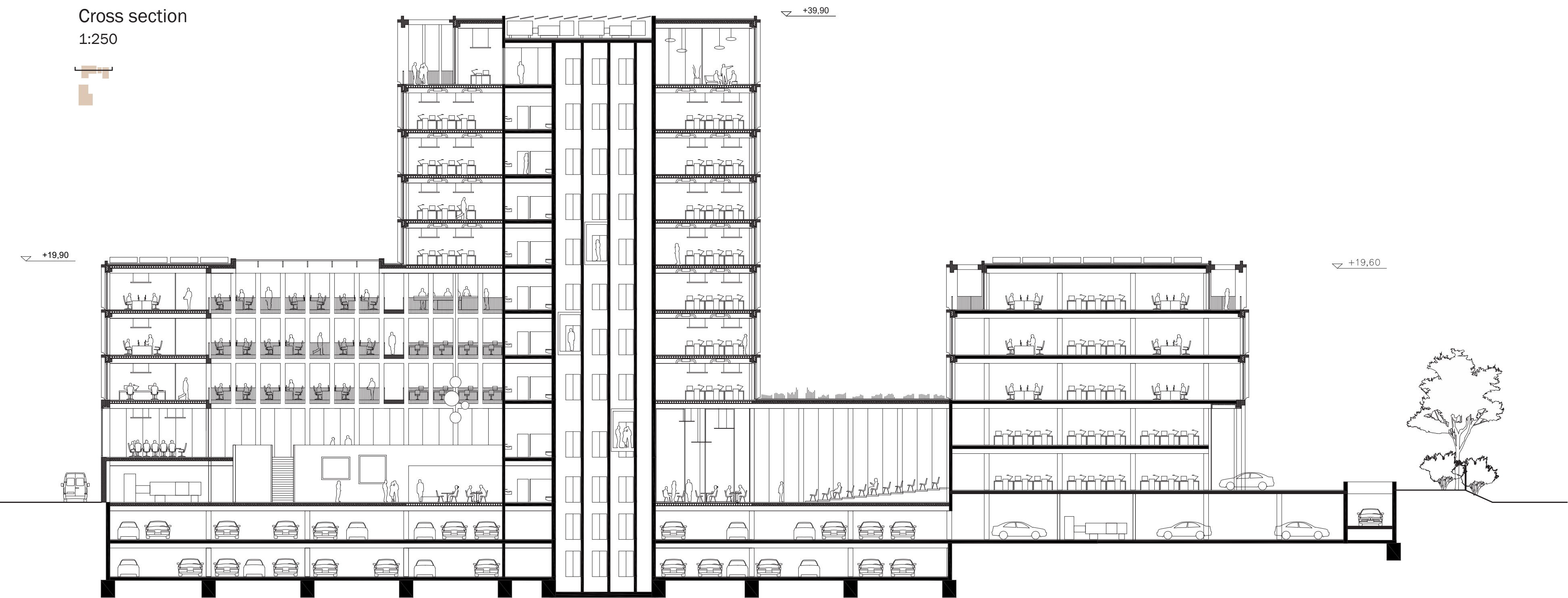


Cross section
1:250



DCB III

DCB III building is the exception within the ensemble of building blocks. Its tower reaches to the maximum height of 40m and its base is wrapped around the central courtyard. In its heart is the main foyer which vertically connects the lower three office levels. While having the possibility to be partitioned into smaller offices these floors are designed to accommodate new types of collaborative working styles and co working environments.

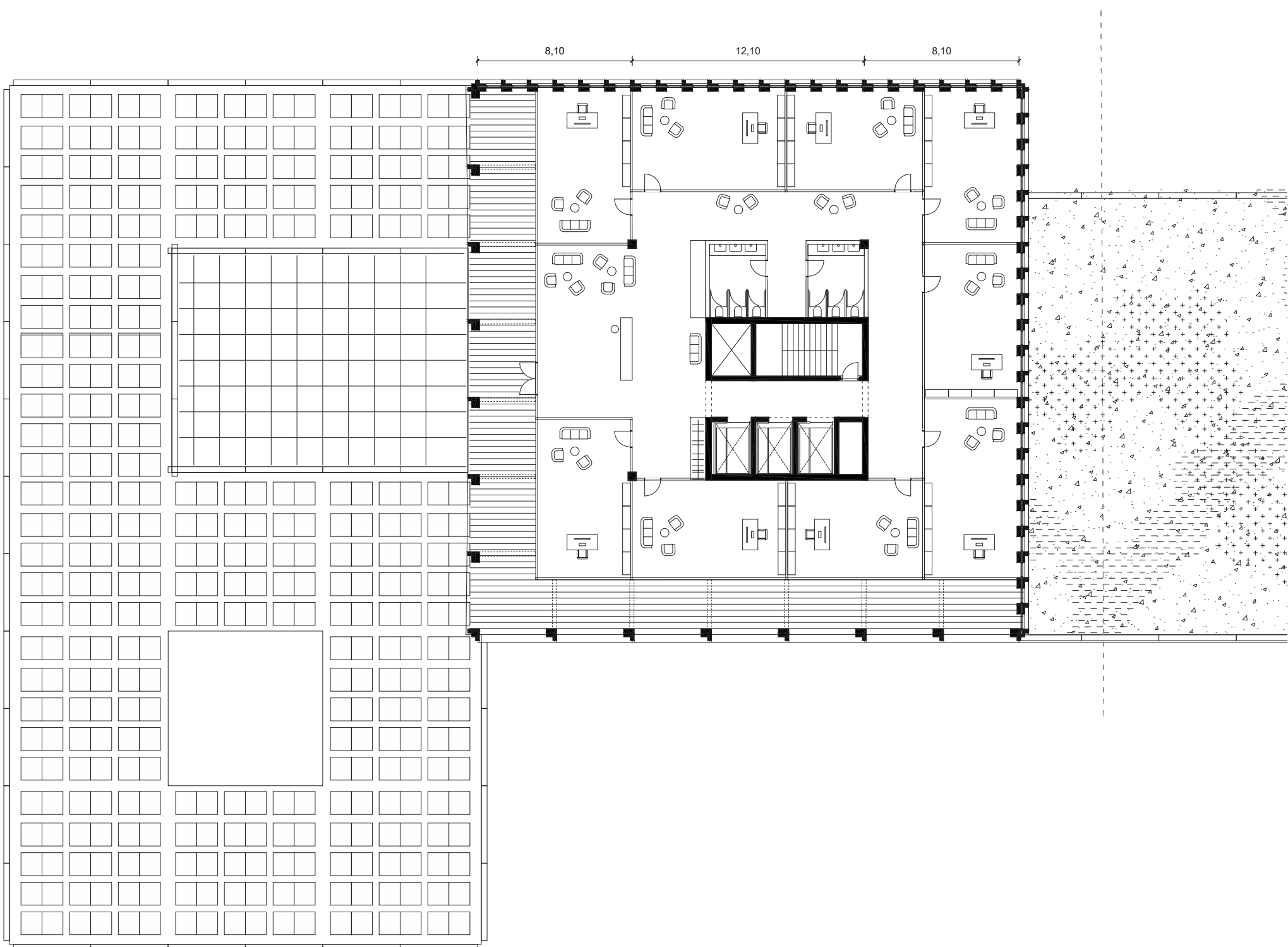
The foyer

The foyer is the main representative space of the DCB Forum. It is located in the heart of DCB III building and connects all shared and publicly accessible spaces. The foyer extends through the lower office floors towards the sky bathing the common areas in soft zenithal light. The diffused light complements the artwork which can be exhibited both as a permanent exhibition throughout the vertical void or as a temporary exhibition along the perimeter of the ground floor. Directly connected to the main entrance the lobby features the reception desk where visitors are welcomed and given further directions.

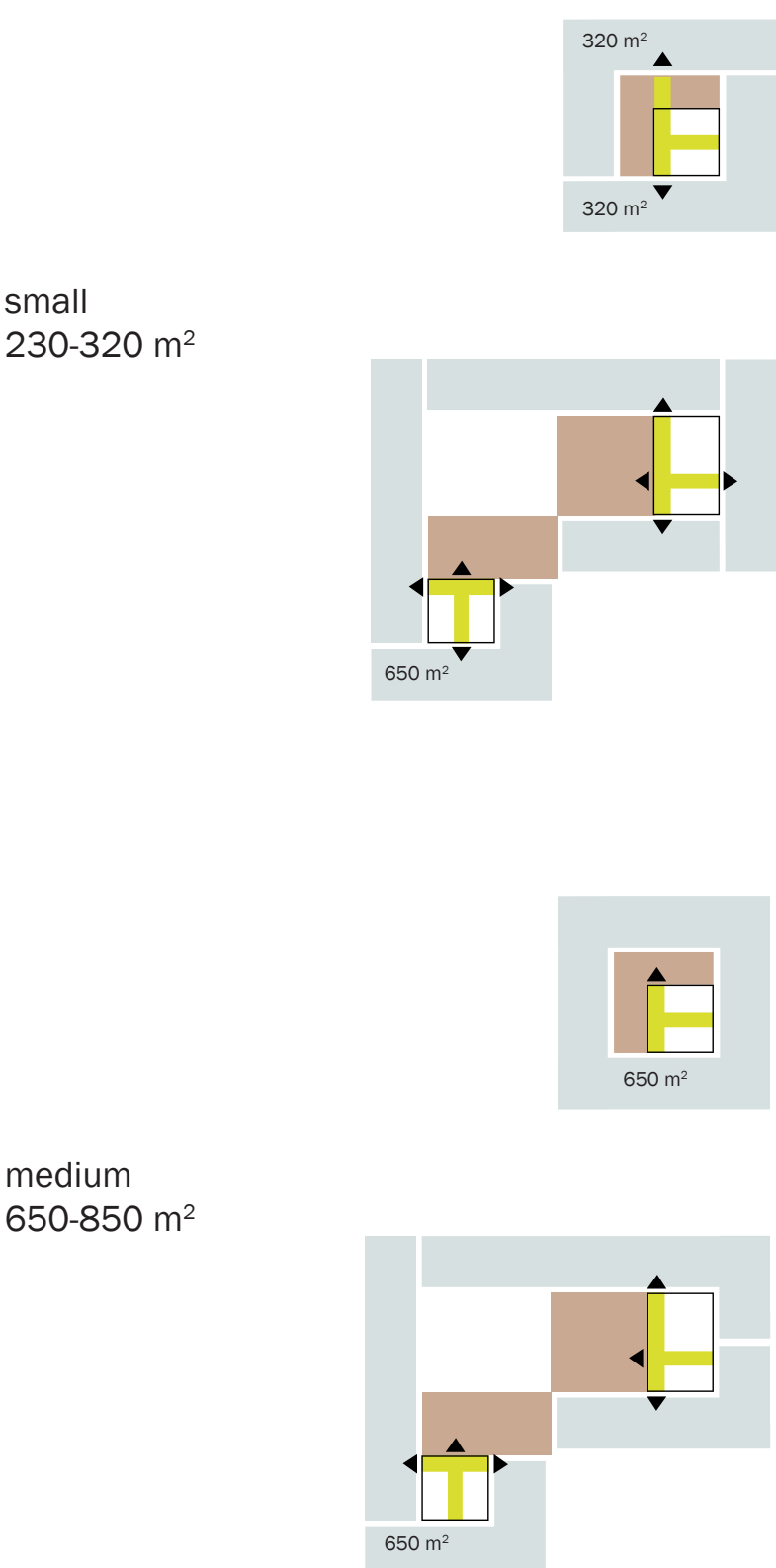
Above the reception desk the sheer wall of the tower core exposes the most valuable pieces of art which can be observed from all levels of the atrium and at the same time protected from direct contact with traffic.

The relatively closed interior facade of the atrium gives an impression of an external courtyard. While bringing together the lower levels of DCB III it provides enough privacy to ensure undisturbed work environment of the office floors.

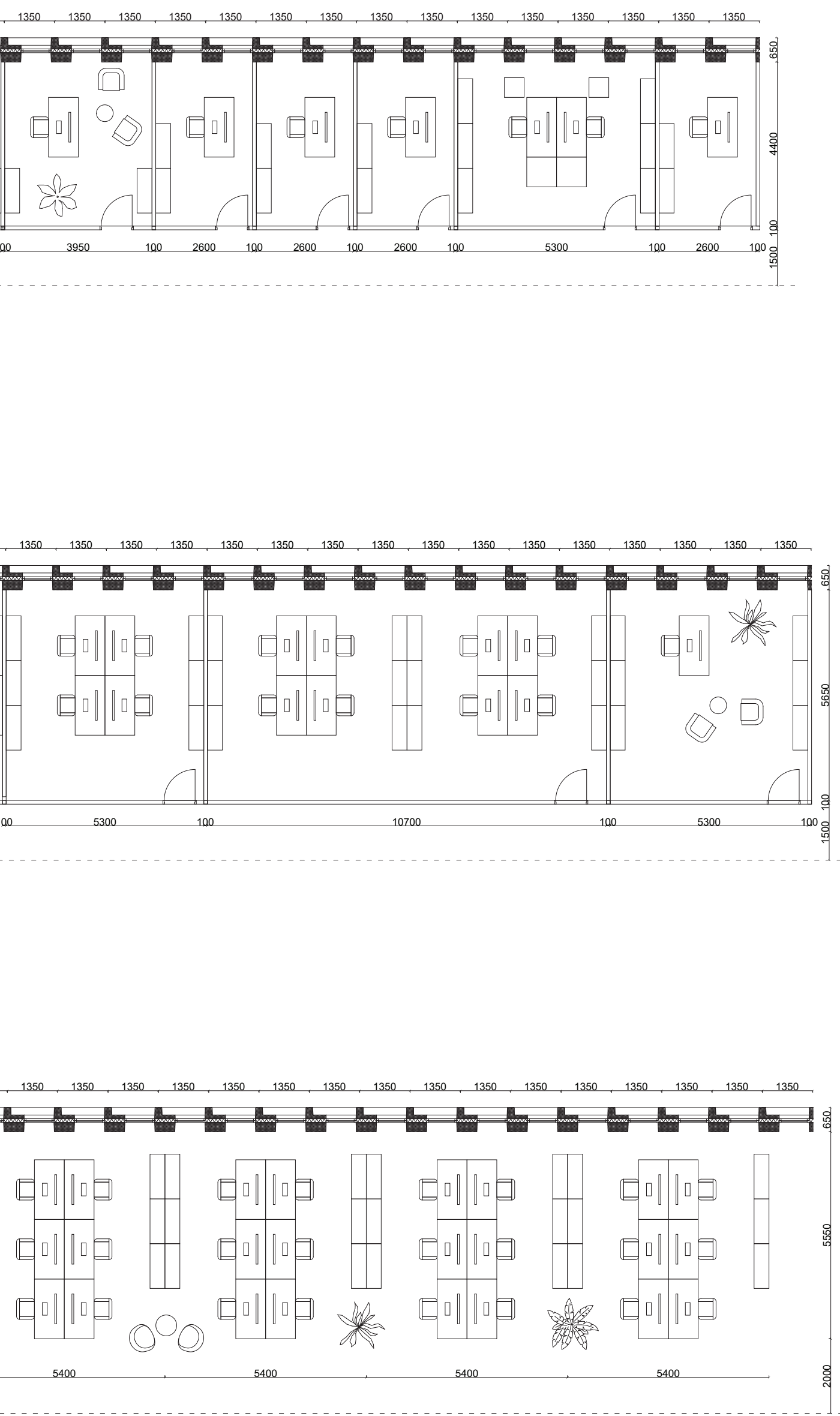
Floorplan, level +9
1:250



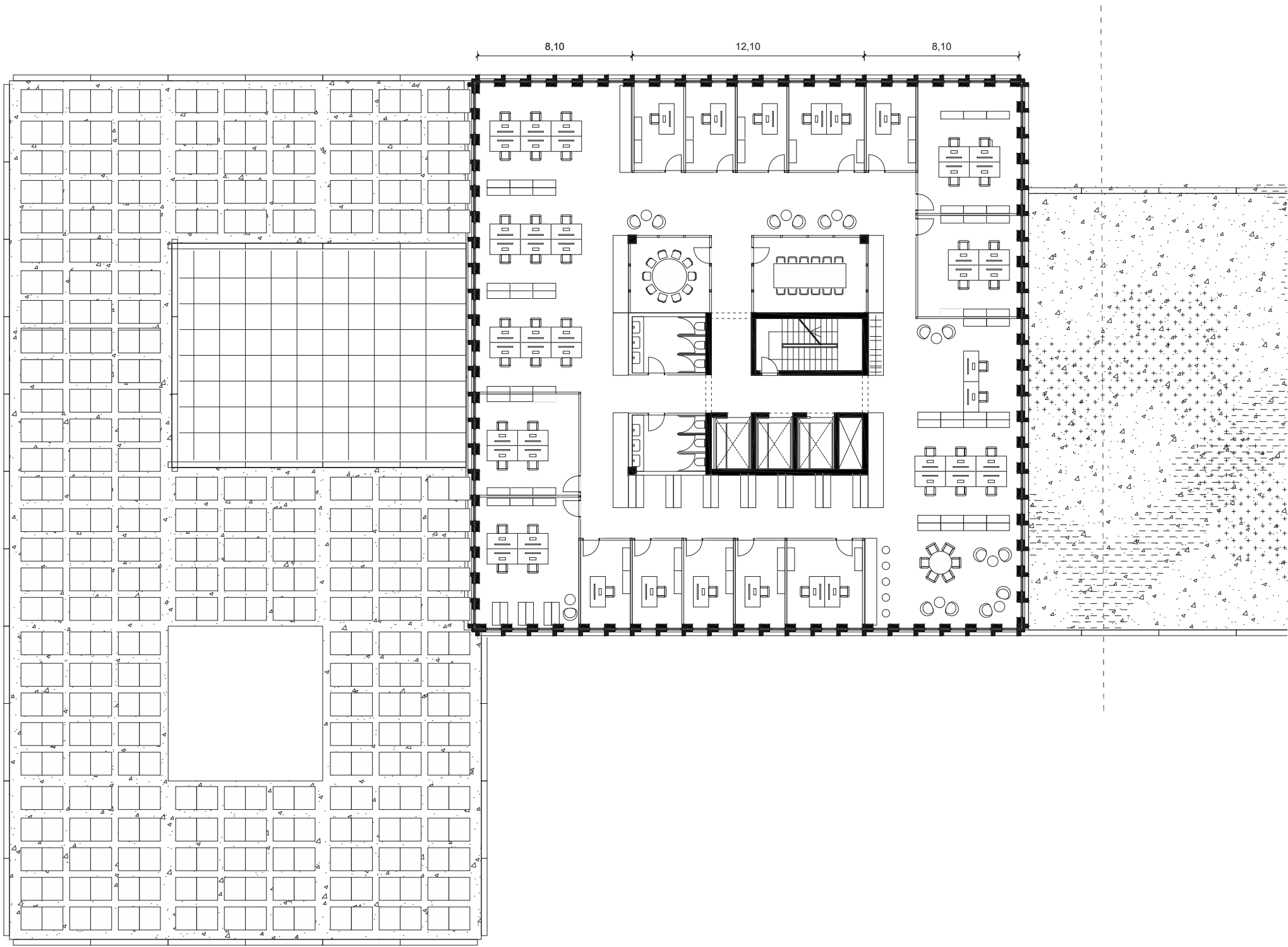
Office floor division



Office unit division



Floorplan, level +5
1:250



Floorplan, level +2
1:250

