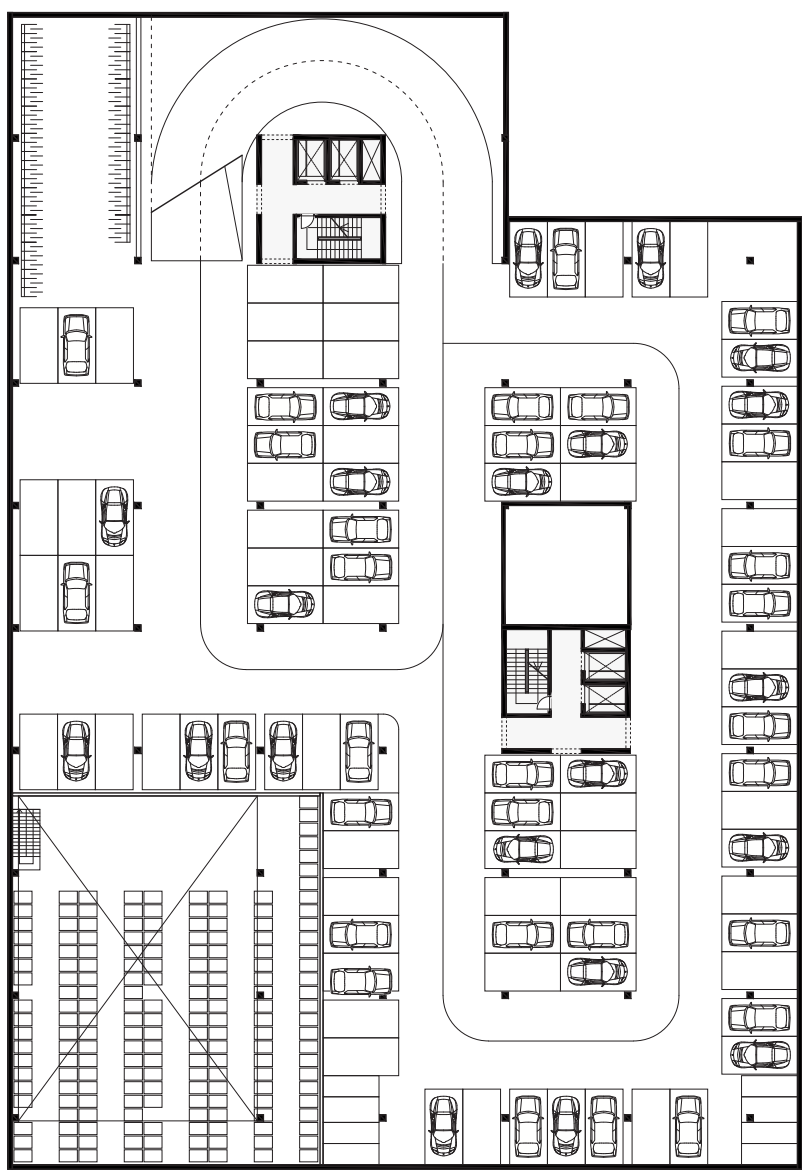
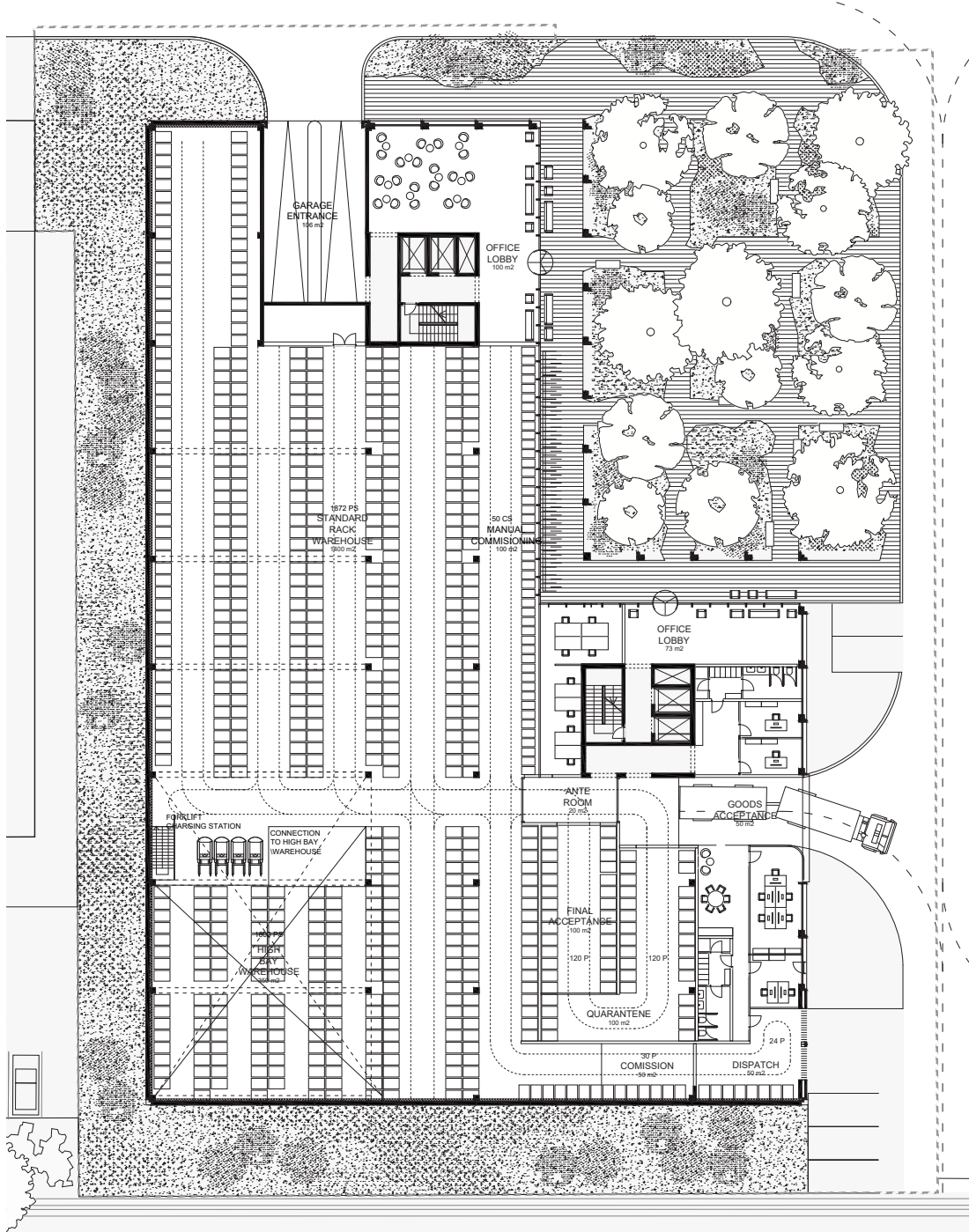


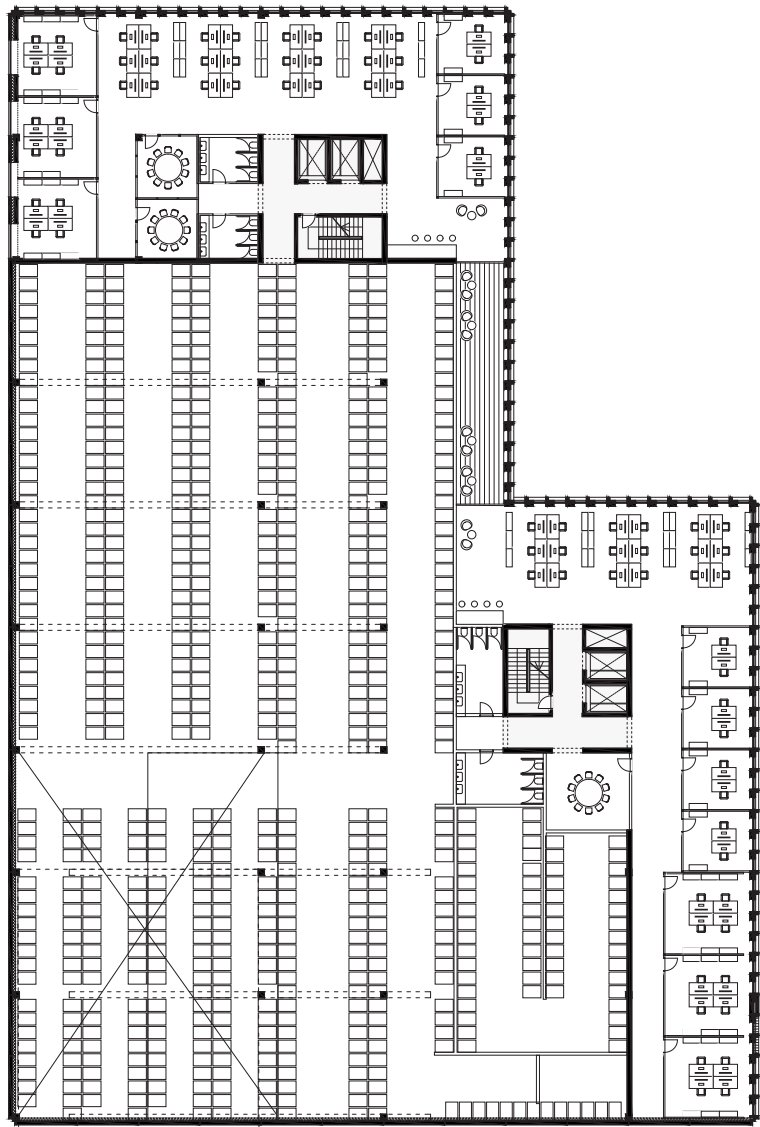
Floorplan, level -1  
1:500



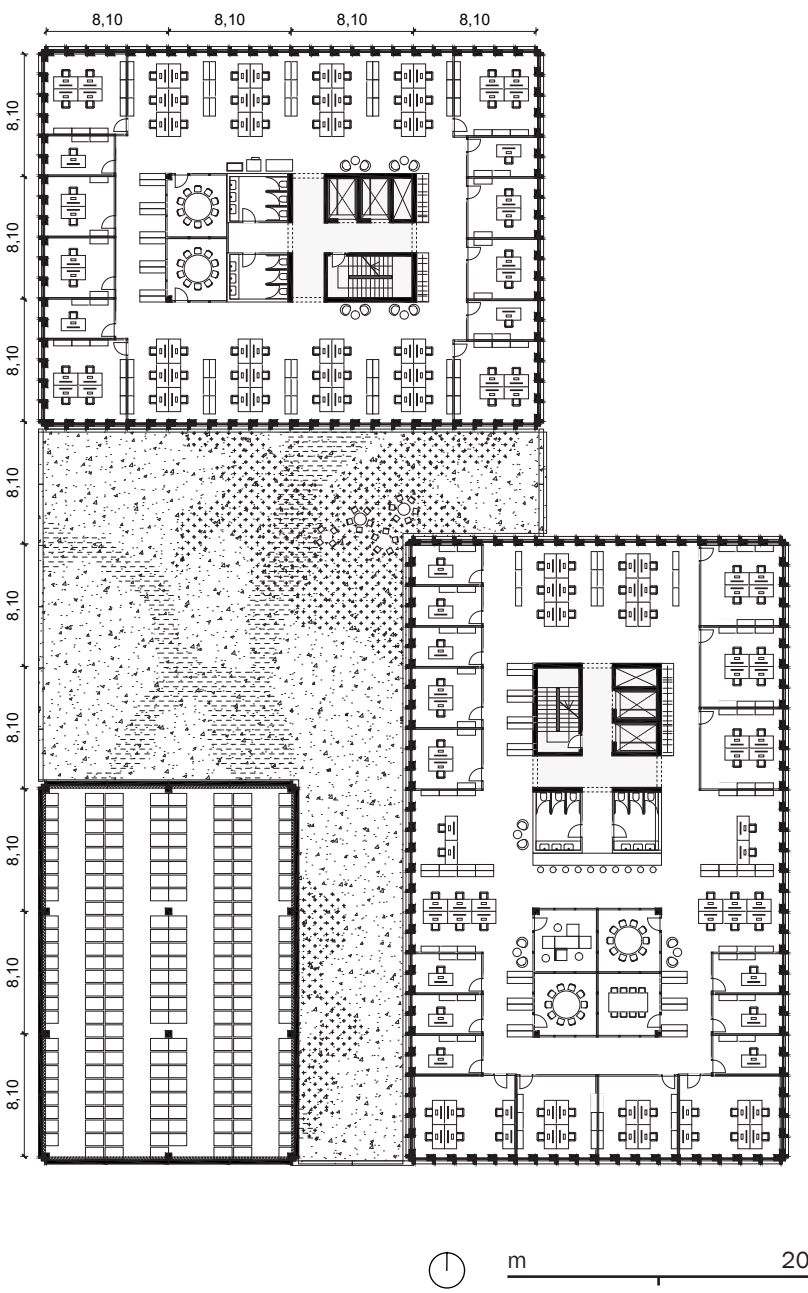
Floorplan, level 0  
1:500



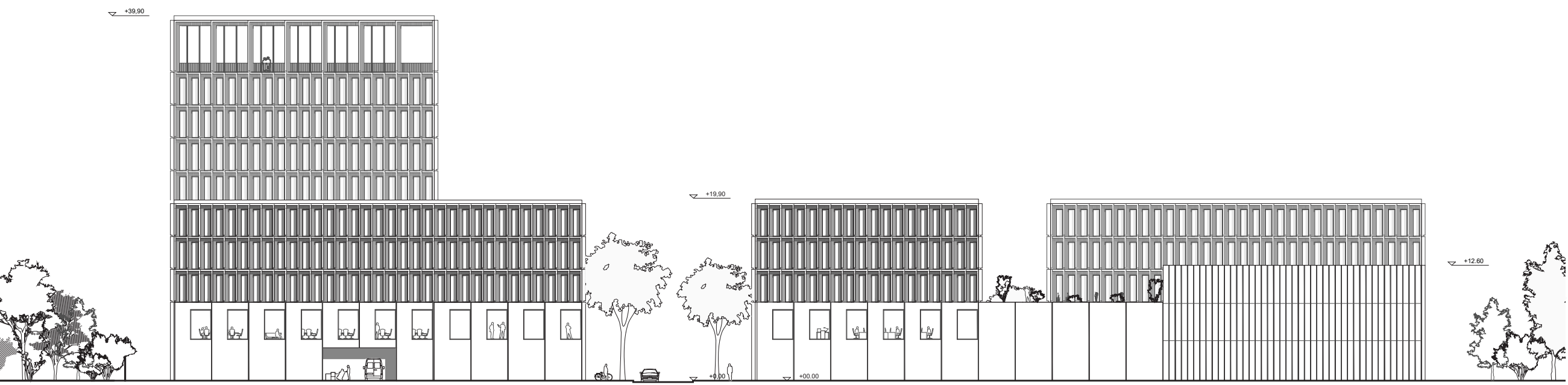
Floorplan, level +1  
1:500



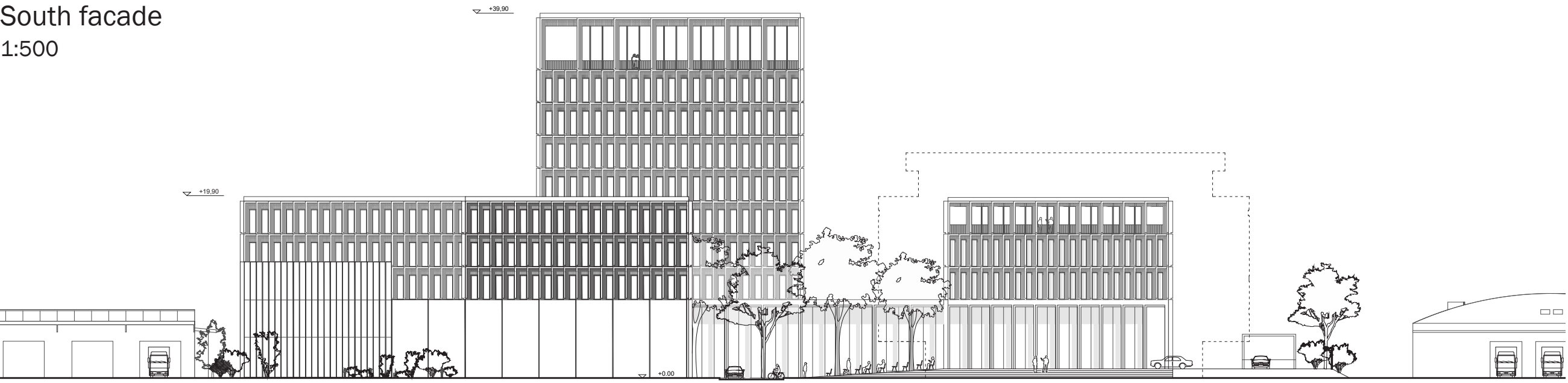
Floorplan, level +2  
1:500



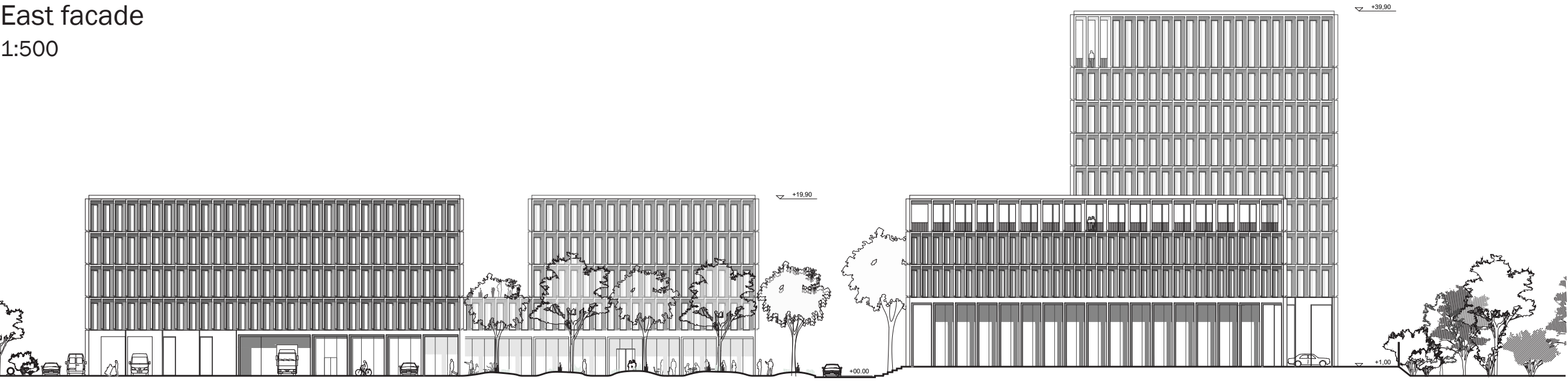
West facade  
1:500



South facade  
1:500



East facade  
1:500



DCB I

The existing Dimnikoban building is the protagonist and initiator of the proposed urban form. It is absorbed by the courtyard typology and belongs to the same family. It is connected to the DCB III building through the courtyard portico through interior and exterior walkway. From this walkway one can enter the auditorium which lies alongside it and bridges the height difference between the plots.

DCB II

DCB II represents the logistic heart of the ensemble. From the outside this is not immediately apparent as the volumes blend into the urban composition. Nevertheless the majority of the ground floor is occupied by the warehouse except for smaller lobbies that open into the garden. The two lobbies are connected by the external colonnade and in places one can see a glimpse of the warehouse activities inside. DCB II selectively exposes and conceals its primary use. Its friendly and human-scale portico creates an inviting common space for office workers, while the simple and closed facade on the outer perimeter discloses the common nature of DCB II and its context.

