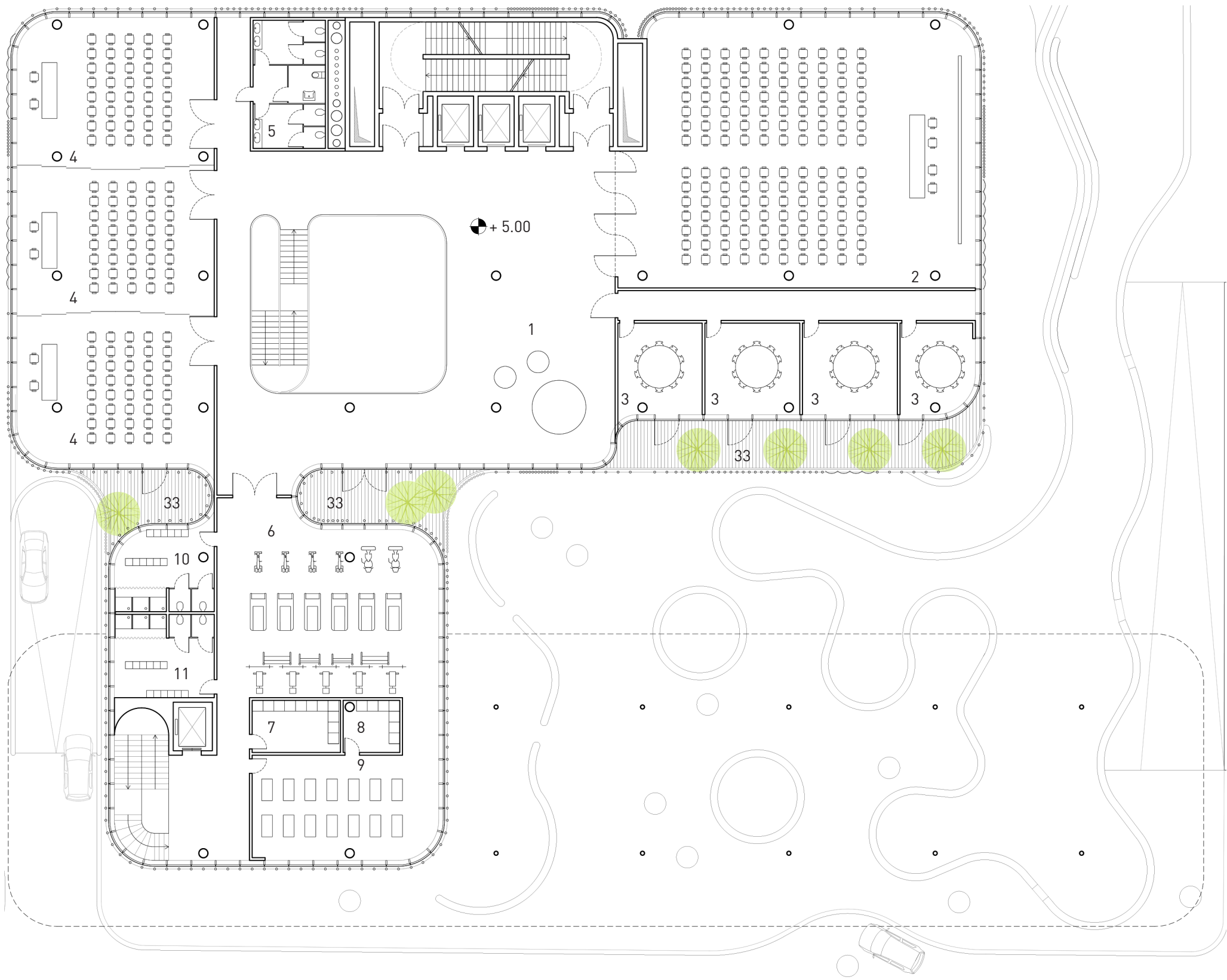
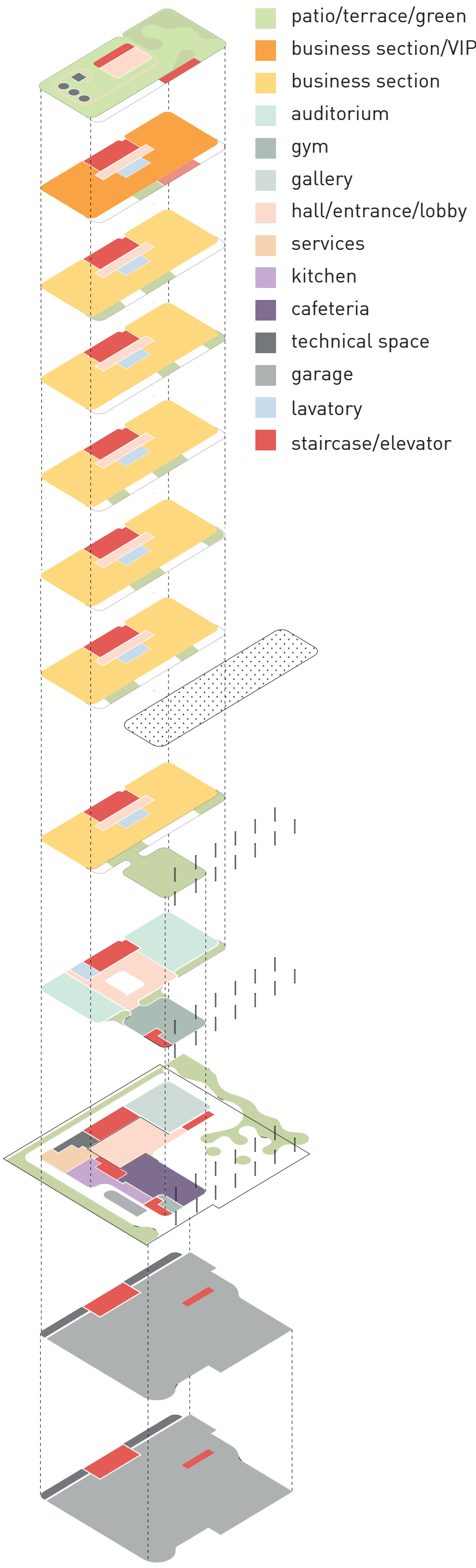
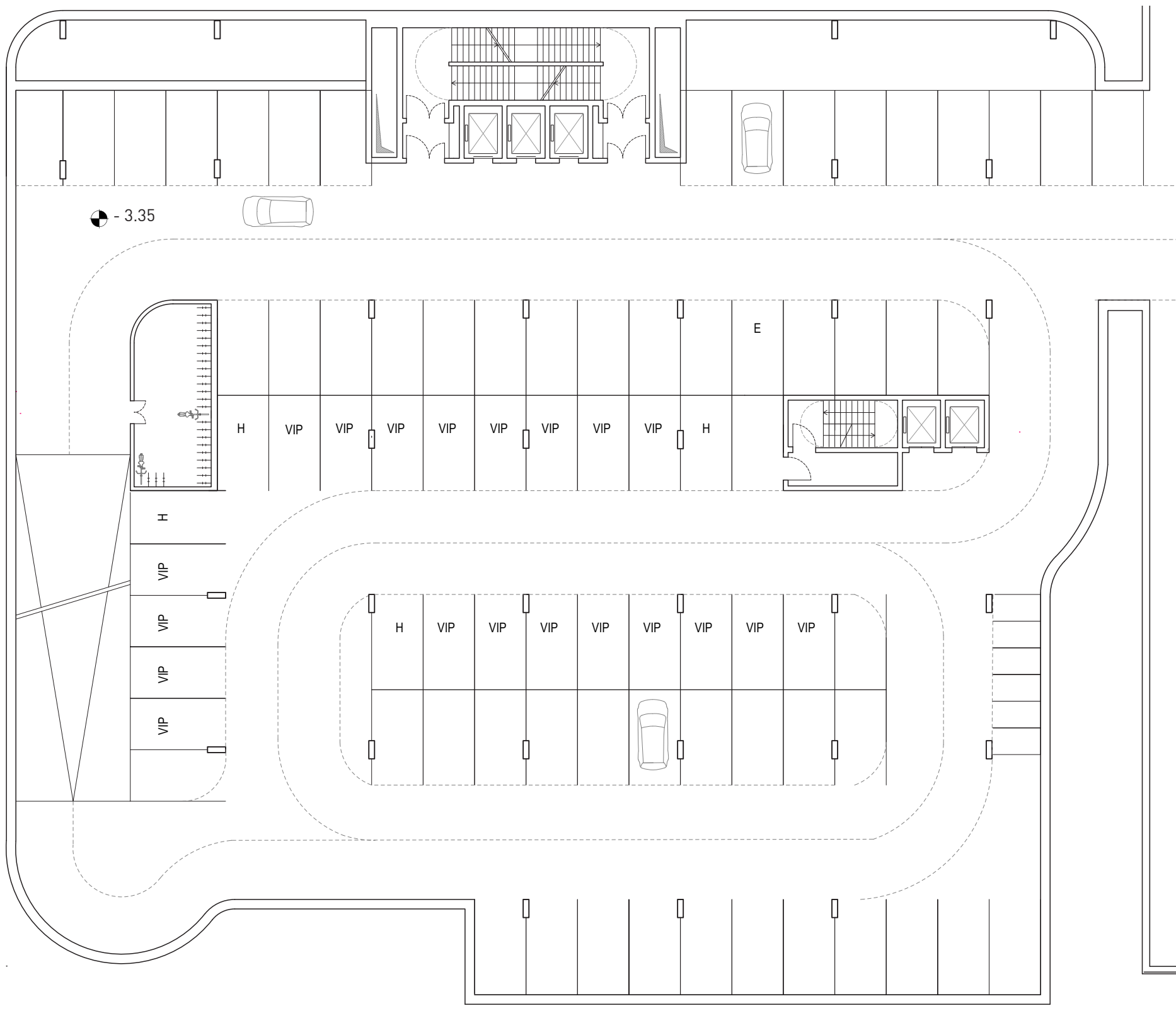


Working and meeting in the age of information technology

In the tradition of “office planning”, the **spatial disposition of workplaces** and services was often the direct **translation of a hierarchical “company diagram”**. But today many **communication procedures** are taken care by **information technology**, giving **unexpected freedom** to the organization of **physical space**. Its “fundamentals” are natural light, climate control, balance between private and collective moments, **high environmental quality, efficiency** and **flexibility**, all things which are **deeply embedded** in the **spatial organization of our proposal**.



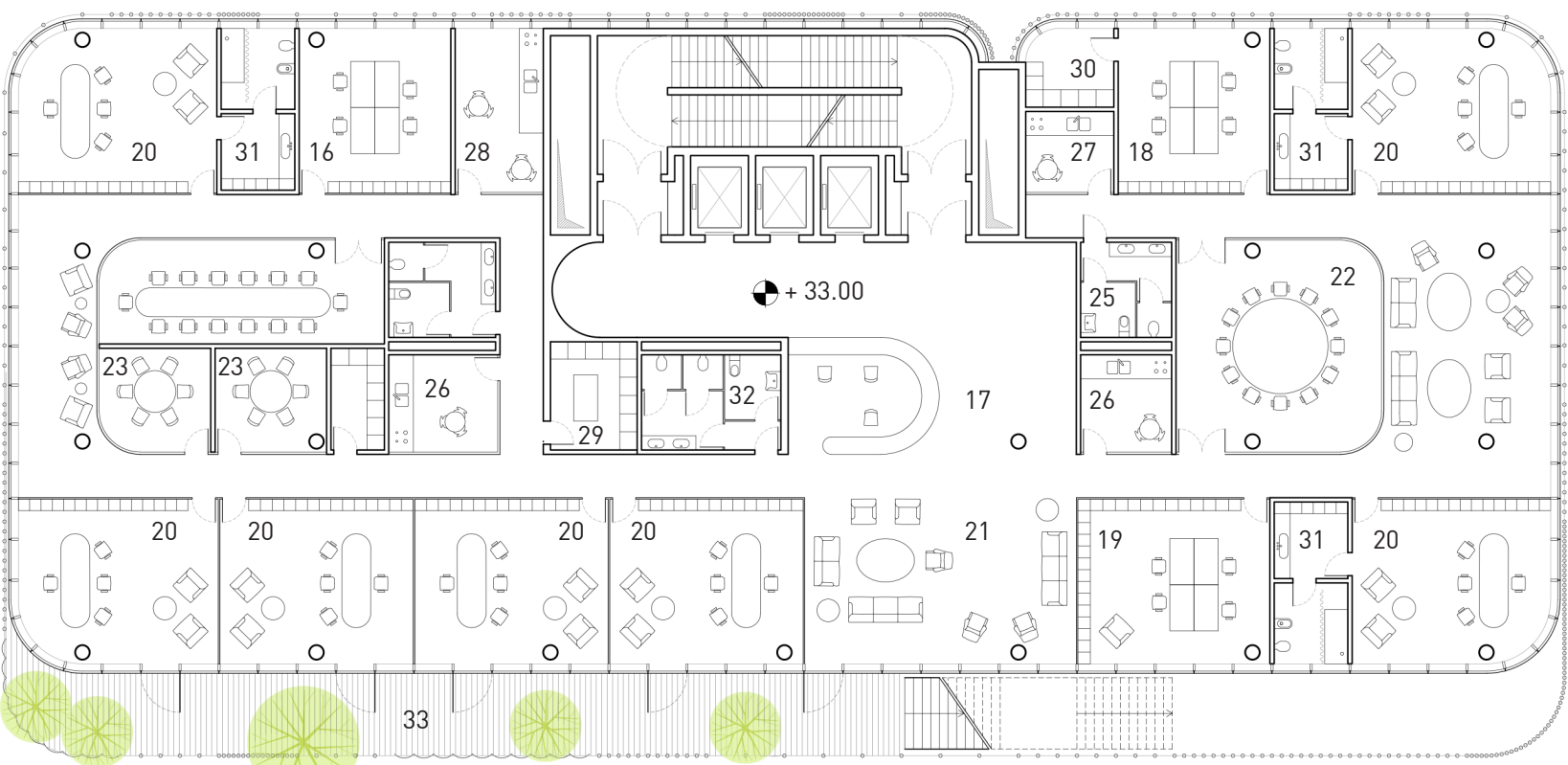
DCB III, first floor plan, scale 1:250



DCB III, underground floor plan, scale 1:250

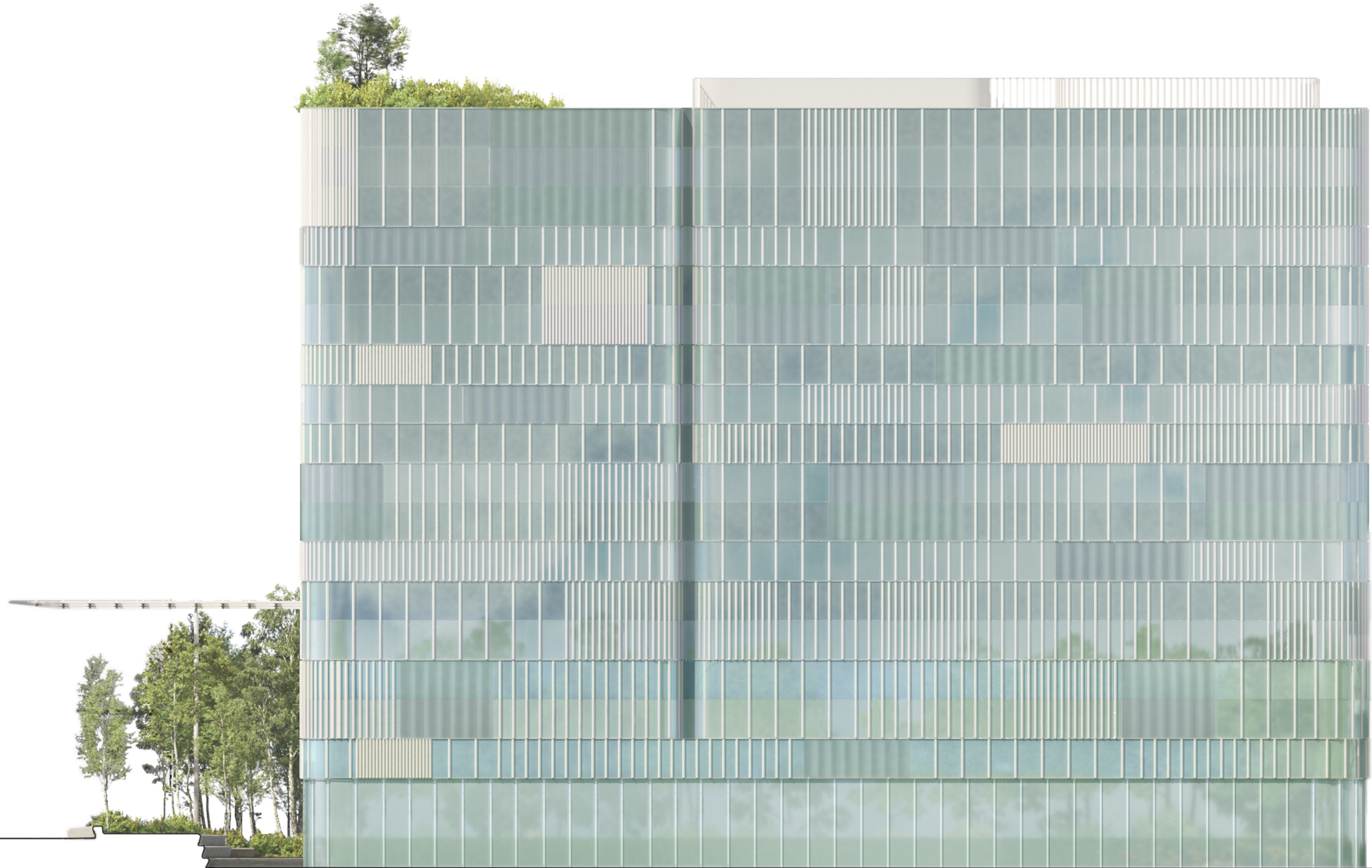
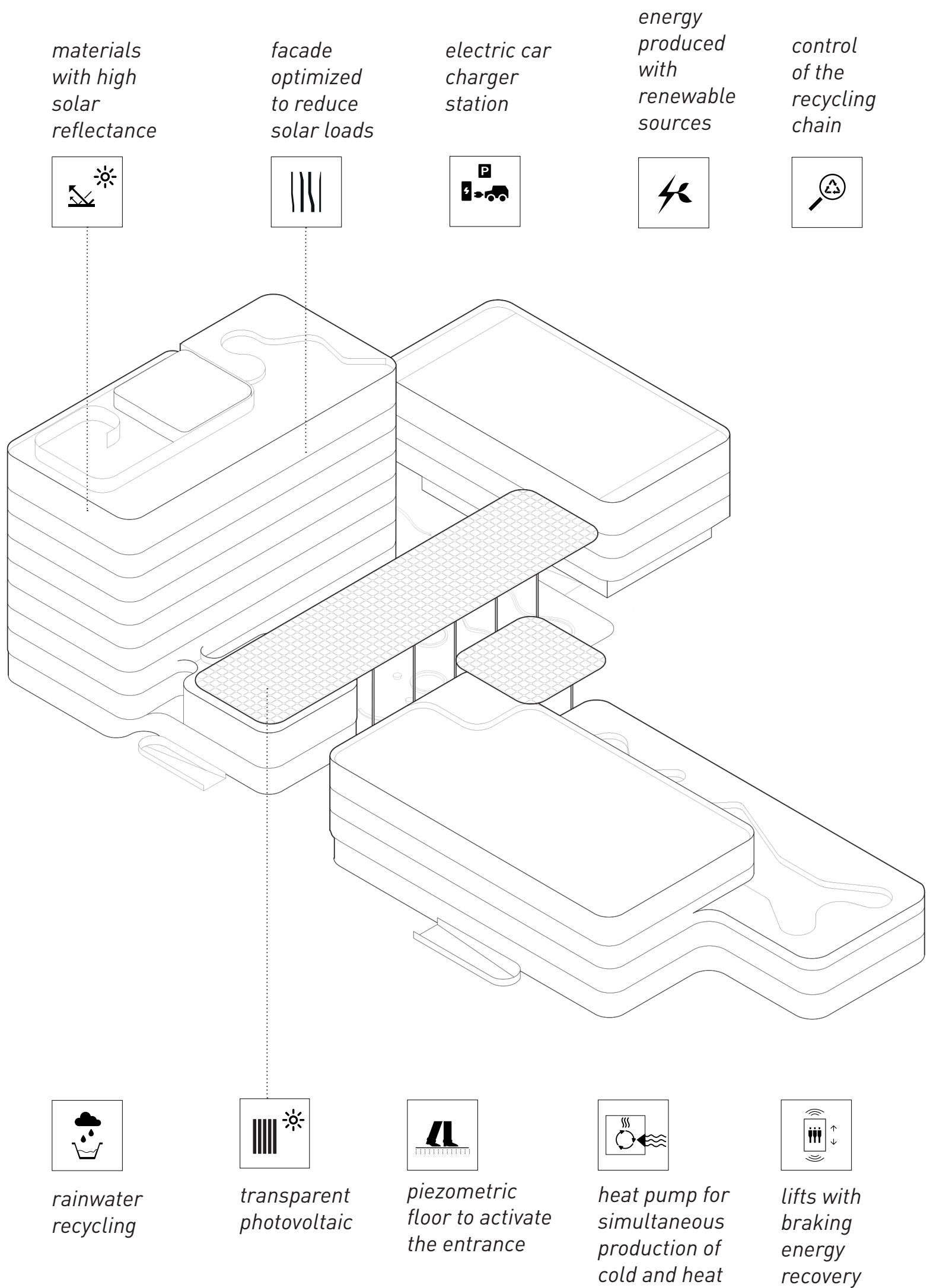


DCB III, standard floor plan, scale 1:250

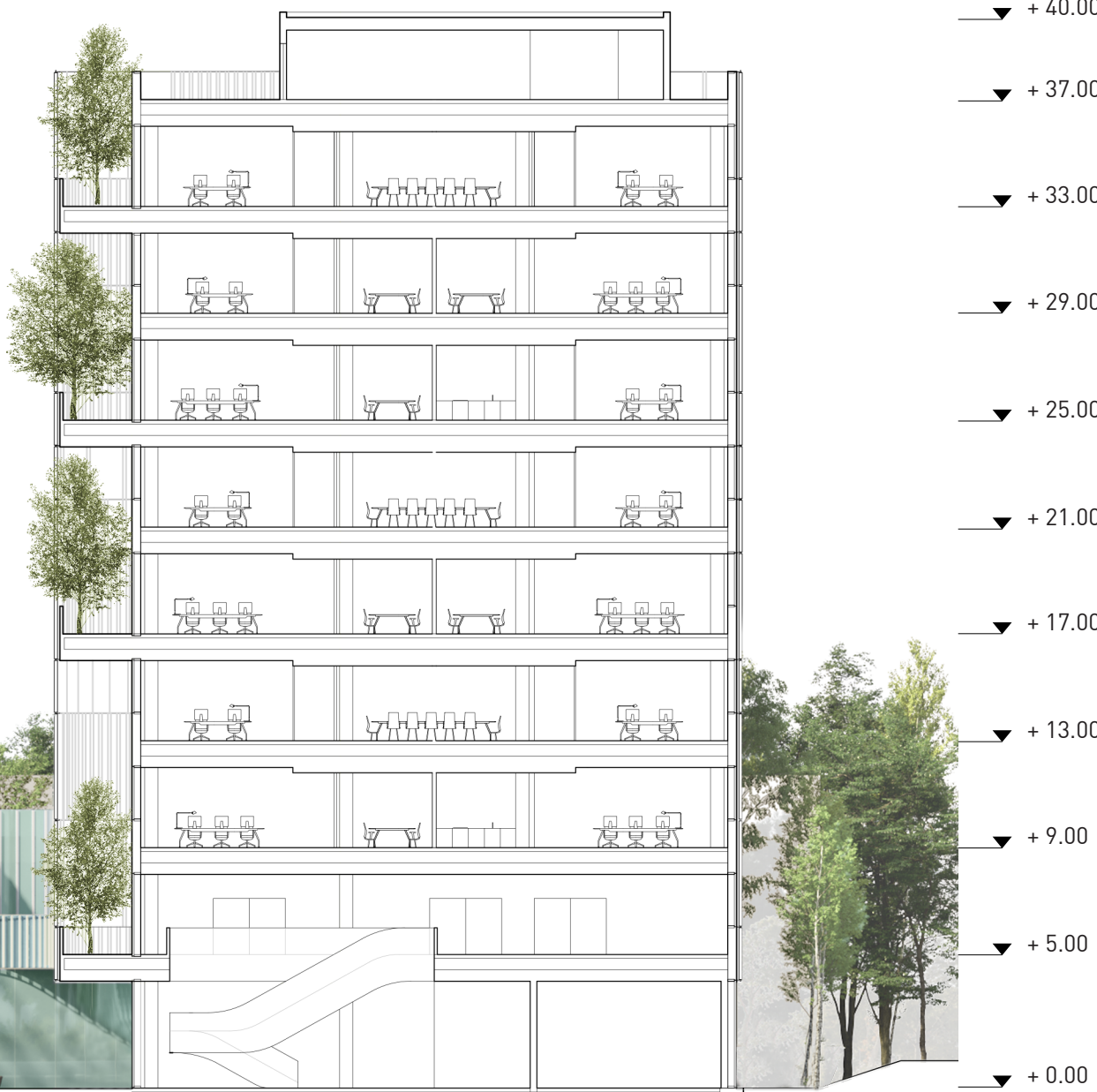


DCB III, eight floor plan, scale 1:250

- | | |
|---|------------------------|
| 1. foyer 275 mq | 18. secretariat 30 mq |
| 2. conference hall 283mq | 19. secretariat 38 mq |
| 3. meeting rooms 27mq | 20. vip office 38 mq |
| 4. meeting rooms 92mq | 21. lounge 54 mq |
| 5. restrooms 28 mq | 22. meeting room 51 mq |
| 6. fitness area 121 mq | 23. meeting room 14 mq |
| 7. storage 14 mq | 24. meeting room 35 mq |
| 8. storage 9 mq | 25. restroom 12 mq |
| 9. fitness area – yoga 65 mq | 26. kitchenettes 13 mq |
| 10. changing room 24 mq | 27. kitchenettes 9 mq |
| 11. changing room 25 mq | 28. kitchenettes 17 mq |
| 12. lobby office area 69 mq | 29. storage 11 mq |
| 13. restrooms 16 mq | 30. storage 8 mq |
| 14. office area – single unit 189mq | 31. restroom vip 14 mq |
| 15. office area – double unit 272+272mq | 32. restroom 16 mq |
| 16. terrace | 33. balconies |
| 17. lobby vip area 114 mq | 34. access to terrace |



North elevation, scale 1:250



Section BB' scale 1:250