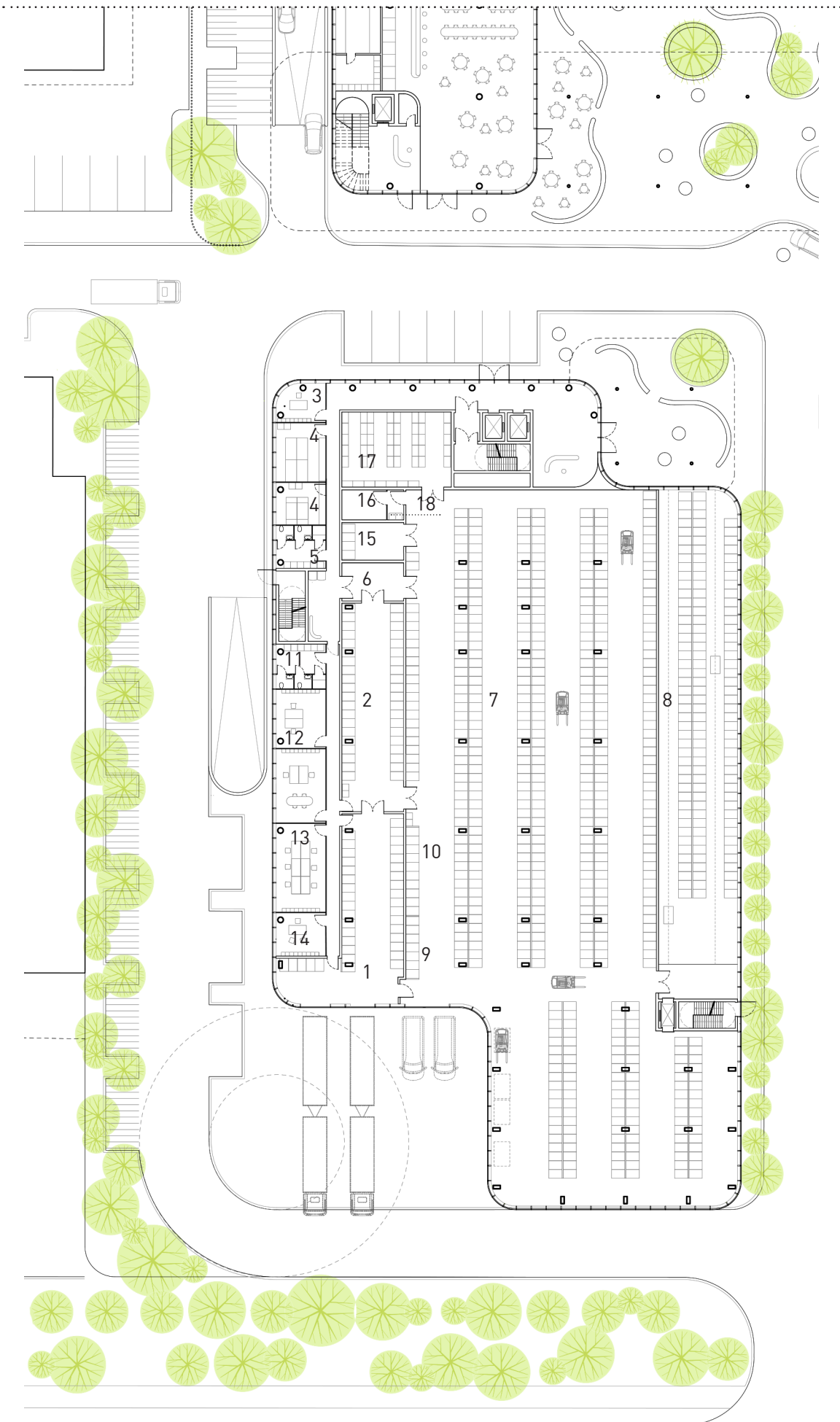
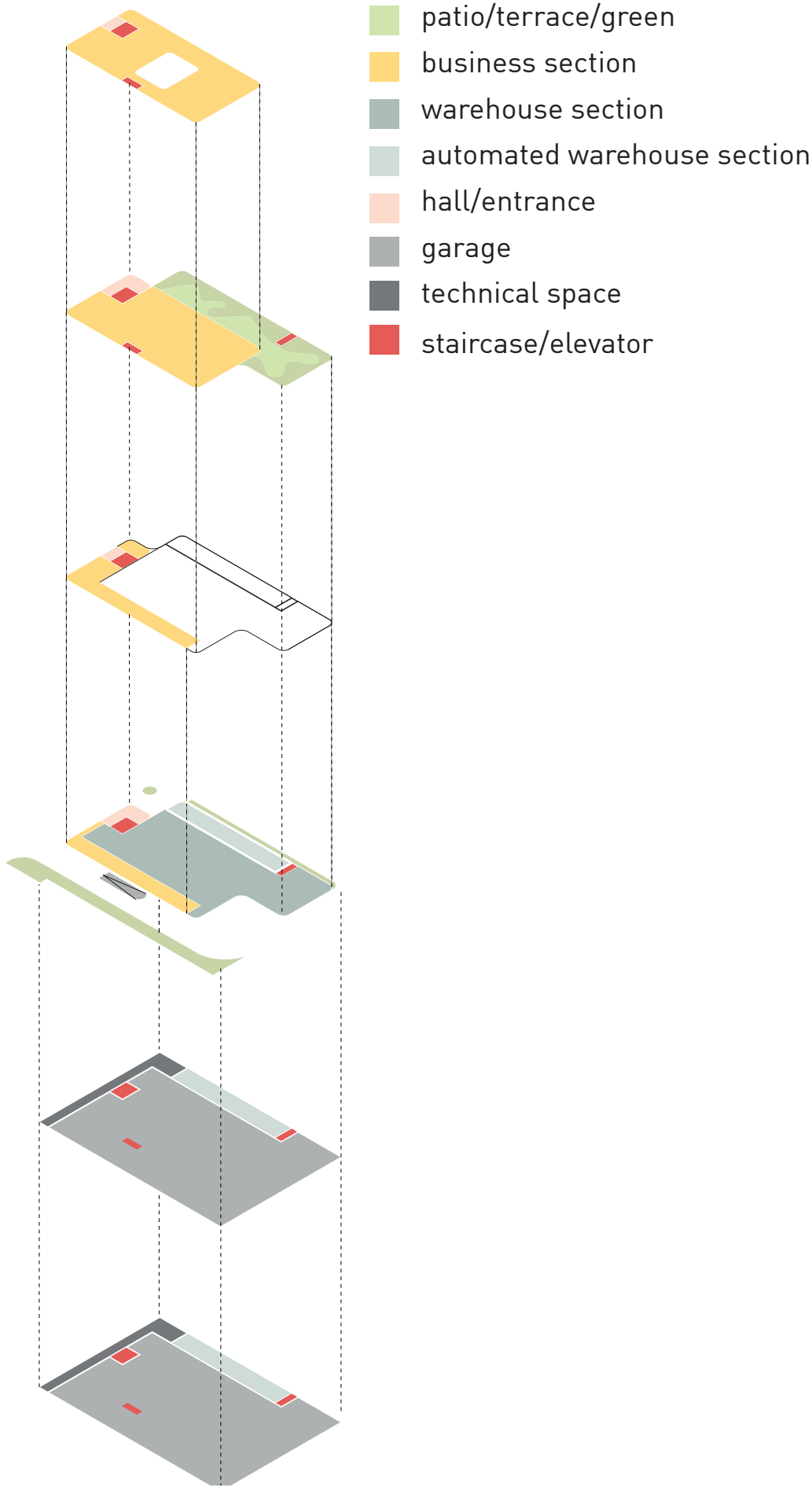


A contemporary warehouse and workplace

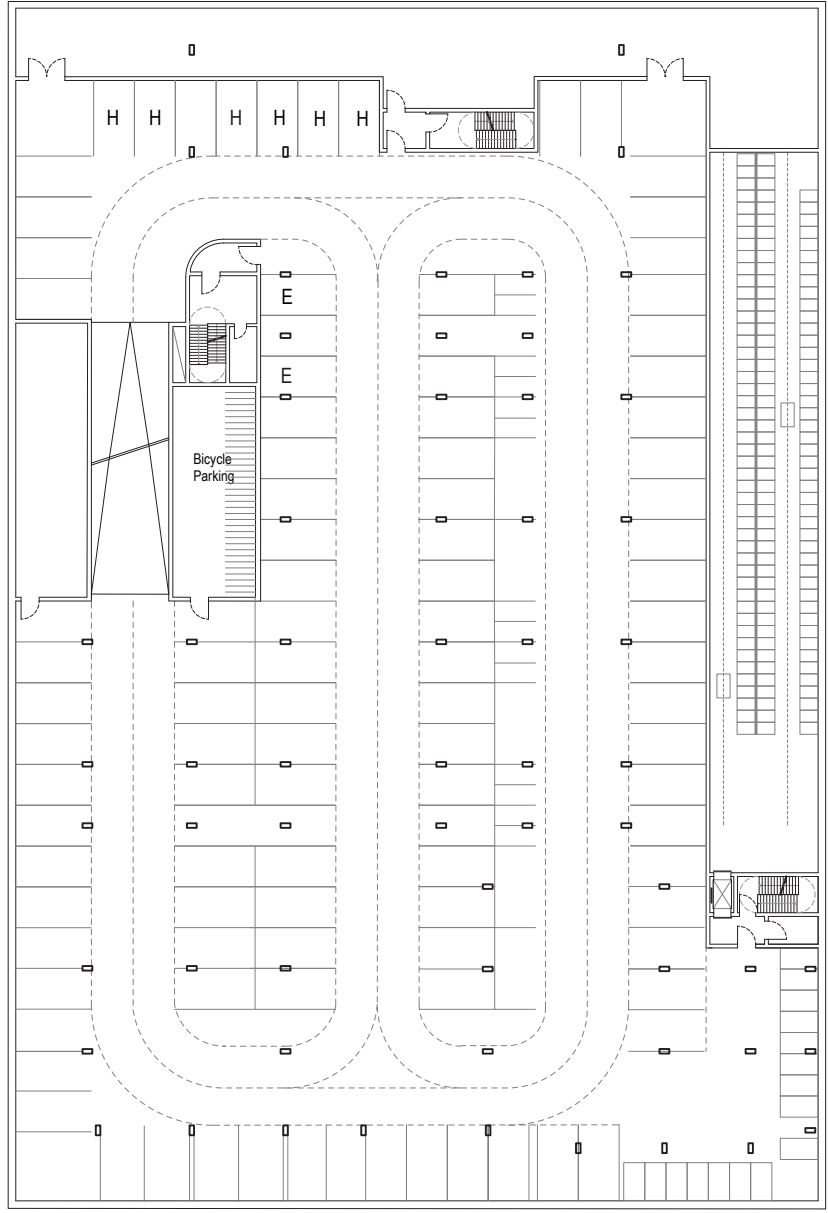
The **economy** and **spatial efficiency** needed by warehouses and workspaces **do not necessarily imply a low architectural quality and poverty of relations.** The envisaged structure of the DCBII manages in an easy, straightforward way the **flux of delivery vehicles** and the independence of the entrances between the **office and research spaces on the top floors** and the **lower automated and semi-automated warehouse stalls**, both marked by an **extreme flexibility** over time and a **clear relation** with the overall **new urban layout.**



DCB II, ground floor plan, scale 1:500

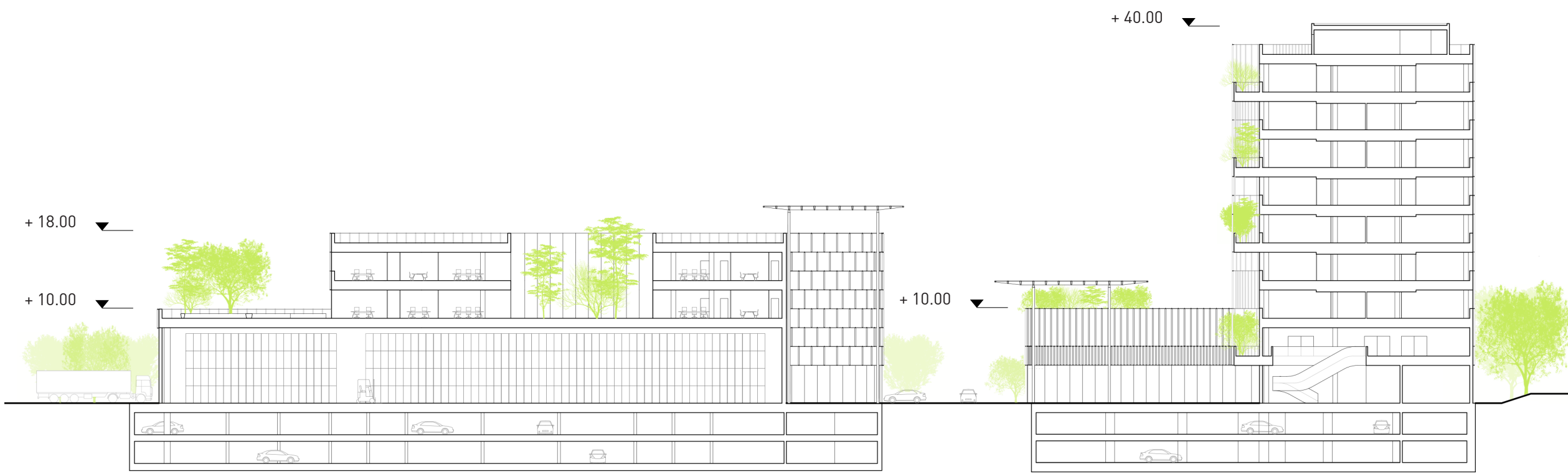


DCB II, first floor plan, scale 1:500

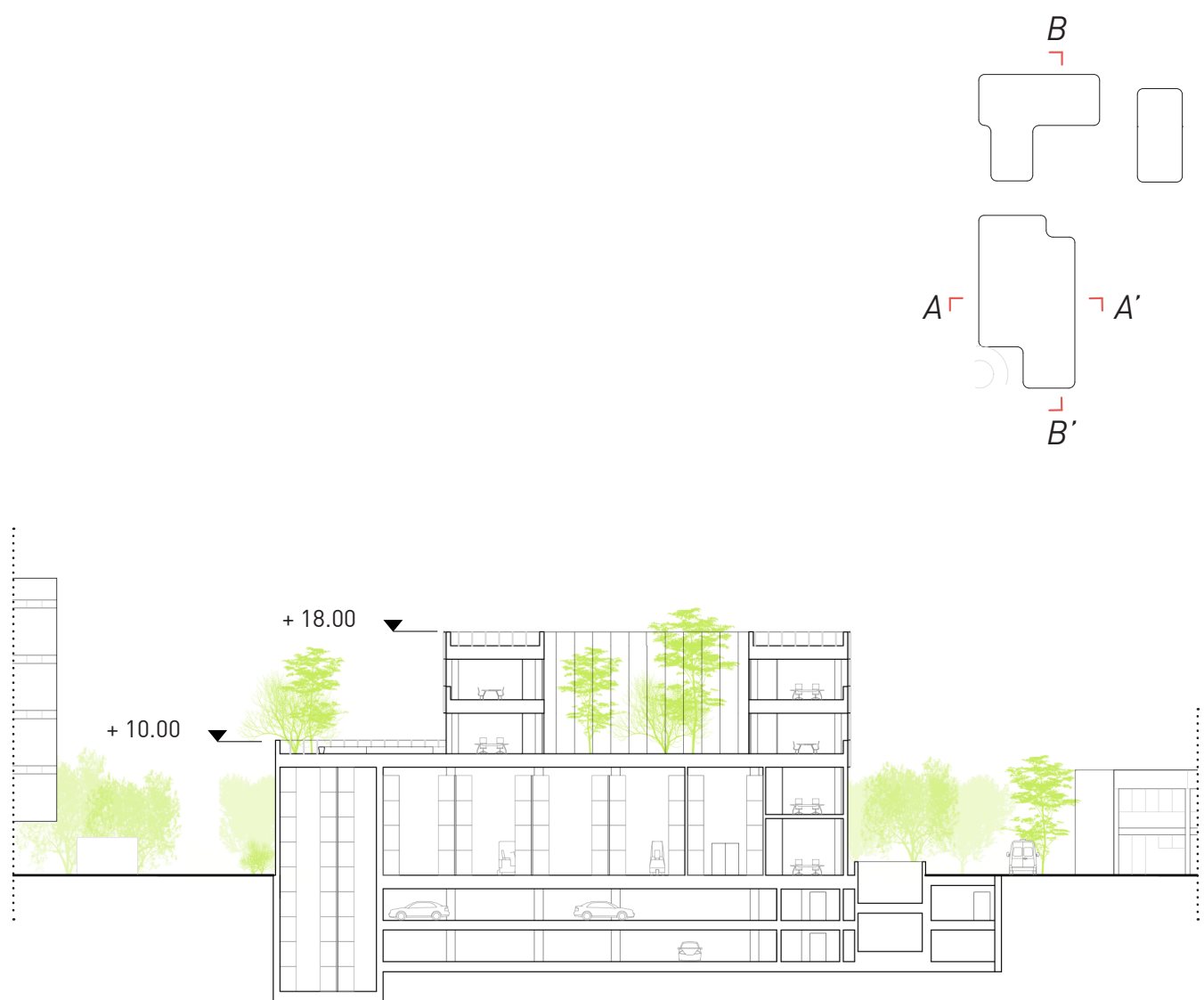


DCB II, underground floor plan, scale 1:500

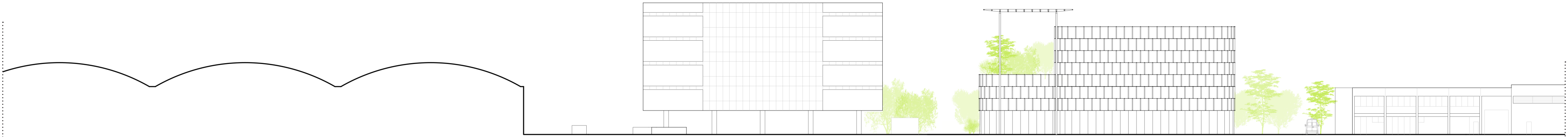
1. initial qualitative acceptance
2. final detailed acceptance
3. production room
4. head of production office
5. wardrobe area
6. anteroom
7. standard rack warehouse
8. high bay warehouse
9. dispatch permits
10. commissioning permits
11. wardrobe
12. room for van drivers
13. office of warehouse workers
14. office of head of warehouse
15. room for storing narcotics
16. cold store
17. cabinets for manual commissioning
18. room for freezer



Section BB', scale 1:500



DCB II, section AA', scale 1:500



DCB II, north elevation, scale 1:500